

RHINO-RACK®

BYD Shark 6 Backbone

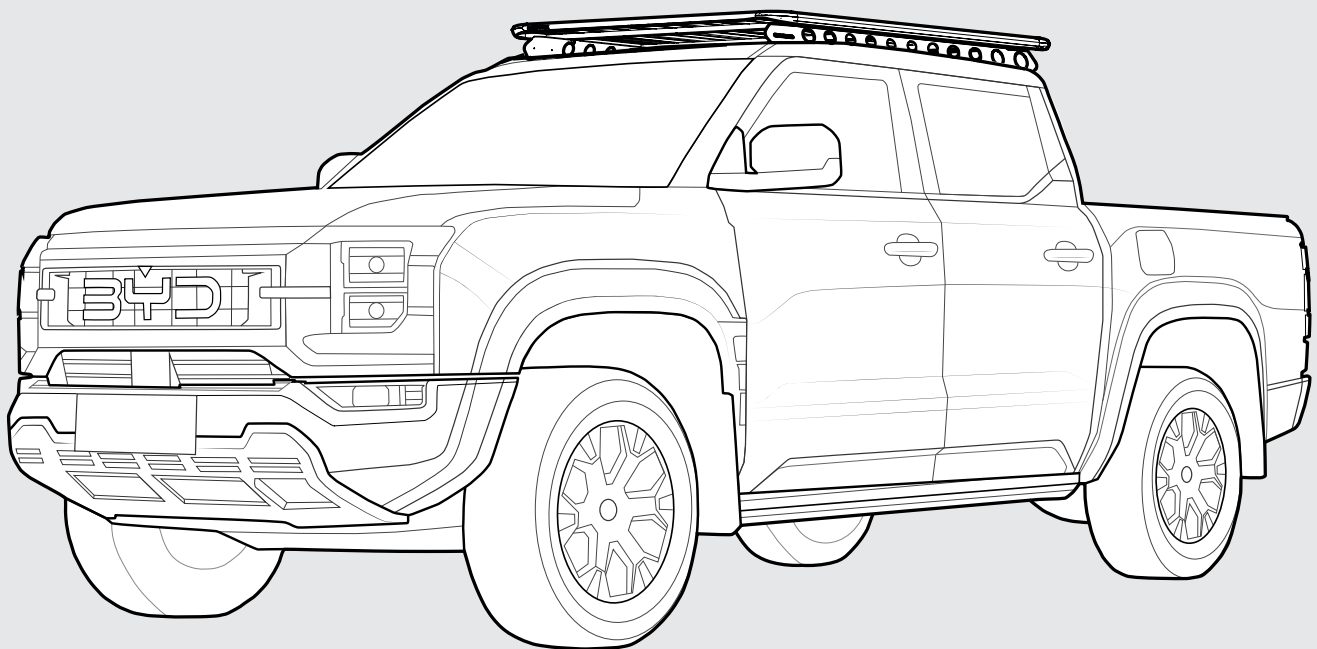
RBSB1

Important:

1. Check the Rhino-Rack website to ensure you have the latest issue of these instructions.
2. Please refer to your fitting instruction to ensure that the accessory is installed in the correctly.
3. Check the contents of kit before commencing fitment and report any discrepancies.
4. Place these instructions in the vehicle's glove box after installation is complete.
5. These instructions must be followed for warranty to be upheld.

Fit Time: 150 mins

TWO-PERSON
INSTALLATION



RHINORACK.COM

Document No: 520-RFI-00260

Issue No: 01

Issue Date: 21/07/2025

Distribute loads evenly and longitudinally as low as possible over the span.

Avoid point loads concentrated at the front or rear.

Use extreme caution transporting wind-resistant loads when cornering or braking.

Do not exceed a maximum speed of **110 km/h** / **68 mph**

Off-road conditions can be more rigorous. Use extreme caution on paths without a sealed surface like tar or bitumen.

Long flexible loads must attach securely to rigid support and be tied down to the bonnet

Surfboard Overhang > 600mm must be tied to the bonnet

Use only non-stretch fastening ropes or straps to attach cargo to roof racks

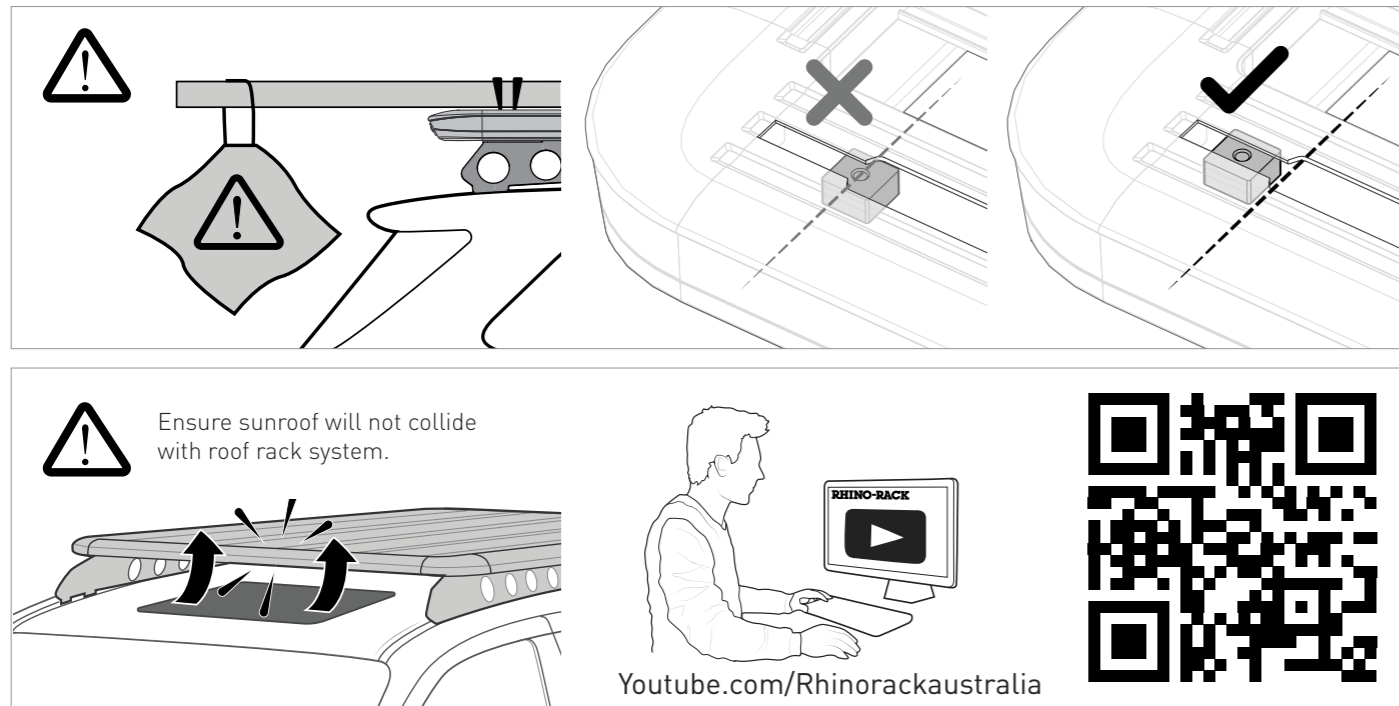
Do NOT obstruct windscreen camera sensors

Warranty for roof rack system will be void if the front of the kayak is not secured to the bonnet

Racks must be removed when vehicle is put through an automatic car wash.

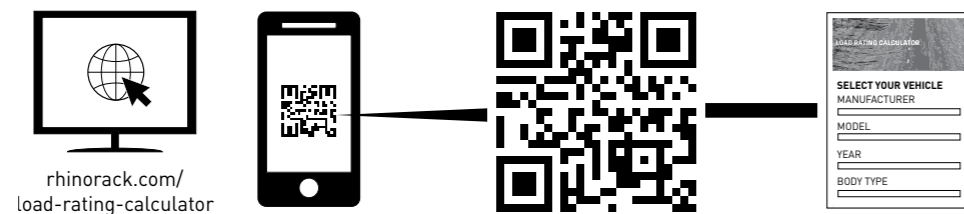
Ensure Ladder is well supported on the ground to support tent. Take extreme caution when climbing heights above 1.2m/4ft.

Tub/tray/canopies can move independently from the vehicle cabin. Rigidly fix to either the cabin roof racks **or** the tub/tray/canopy roof racks but not both simultaneously.



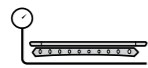
Carrying Capacity

Check the website and the vehicle owners hand book for your vehicle manufacturer's maximum carrying capacity. Load must be evenly distributed over the system.



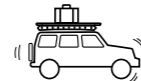
Cargo Load Limit

Total permissible weight allowed on top, and attached to the rack whilst the vehicle is in motion.



System Weight

Total weight of the rack system. (e.g. Crossbars, Backbone, Platform)



Max System Load Capacity

Please ensure you use the vehicle manufacturer's maximum roof allowance if it is lower than the figure listed in the fitting chart/supplement.



Vehicle Manufacturer's Load Limit

Total permissible weight attached to the rack. This is inclusive of the weight of the rack system.

In Service Maintenance Checks

- All bolt connections should be checked after driving a short distance when you first install your roof racks.
- All bolted connections should be checked again at regular intervals (weekly is recommended, depending on road conditions, usage, loads and distances travelled).
- All bolted connections should be checked each time they are re-fitted.
- Off-road conditions are more rigorous. Check all bolted connections and your load more regularly.
- Ensure that your vehicle manufacturer's GVM, and gross axle weights are not exceeded (refer to vehicle owner's manual).

Torque Settings:

Unless stated otherwise in these instructions, all fasteners should be set to the following torque settings:



Warning

- Do not attempt to fit the rack system to your vehicle unless you fully understand these fitting instructions. Please direct any questions regarding fitting to the dealer from where the roof racks were purchased.
- Off-road conditions can be much more rigorous. Extreme care must be taken on any driven path that does not contain a surface protection layer (tar/bitumen).
- With utility vehicles, the cabin and the canopy/topper move independently. Securely attach cargo to one of either the cabin roof or the canopy/topper, not both.
- Always ensure you fasten your load securely.
- Use only non-stretch fastening ropes or straps to attach cargo to your load.

Note for Dealers and Fitters

It is your responsibility to ensure these fitting instructions are given to the end user or client. These instructions remain the property of Rhino-Rack Australia Pty. Ltd. and may not be used or changed for any other purpose than intended.

Join the Herd!

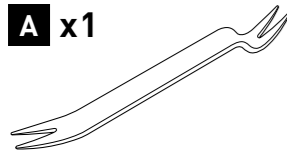
We love creating our products for you and hope you love using them too. For complete peace of mind, register your product at www.rhinorack.com/warranty. This way, we can quickly help you with any future approved fitment warranty claims. And remember – never to forget to Make Space For Adventure!

PARTS LIST

P1 PHASE 1 - ROOF PREPARATION

Trim Tool

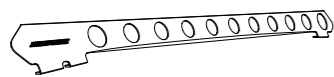
A x1



P2 PHASE 2 - BACKBONE INSTALLATION

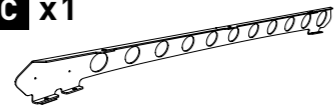
Left Backbone

B x1



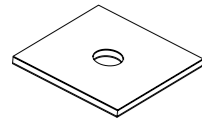
Right Backbone

C x1



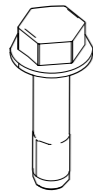
Butyl Patches (4 spare)

D x12



M8 X 35MM Hex Head Bolt

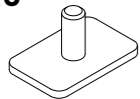
E x8



P3 PHASE 3 - PLATFORM INSTALLATION (6XXXX Series Pioneer)

T-Bolt

F x6



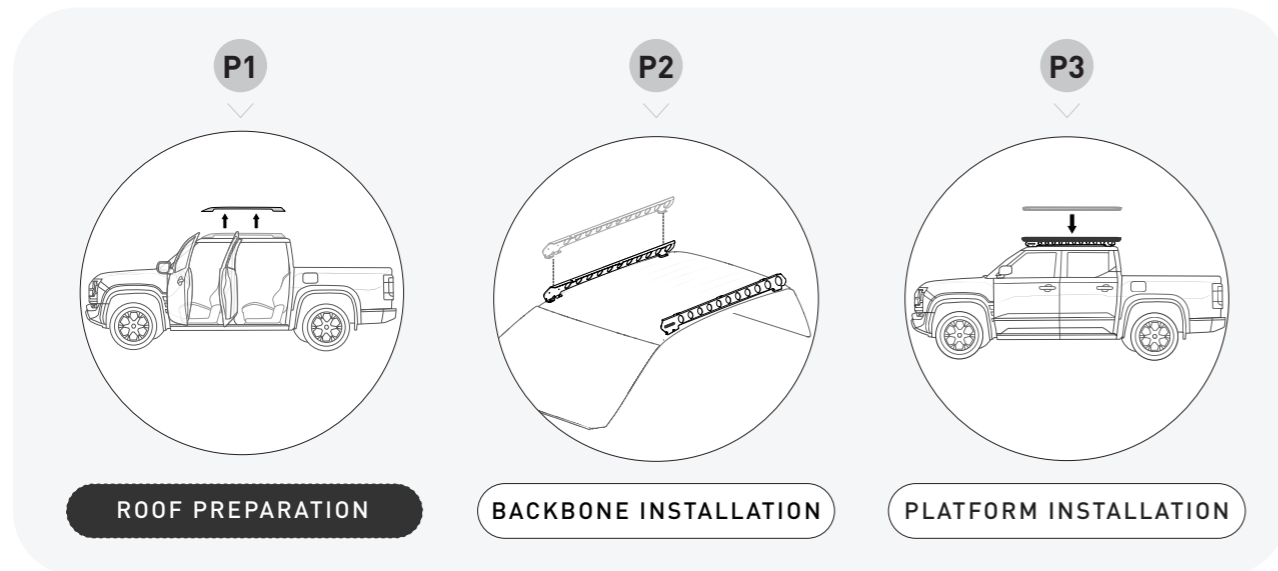
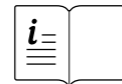
M8 Nyloc Nut

G x6



Fitting Instruction

H x1

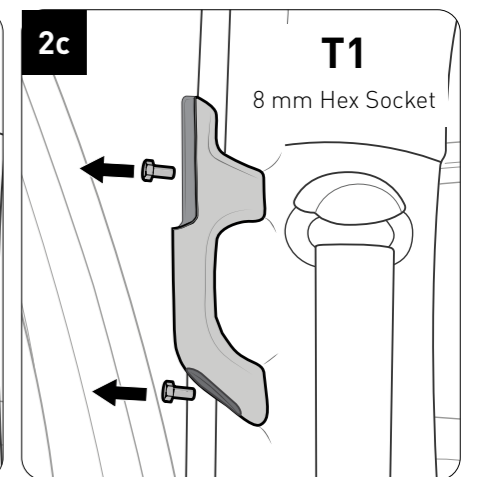
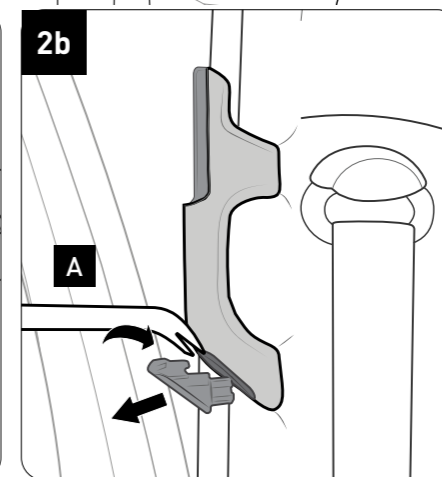
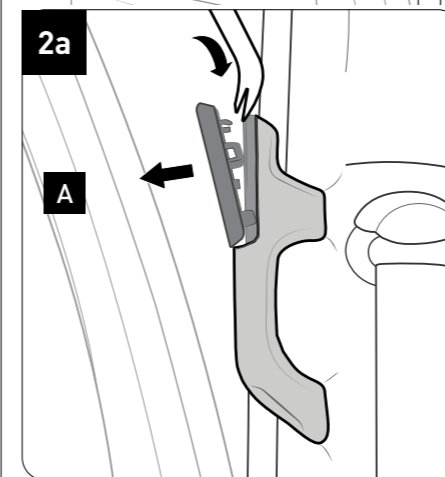
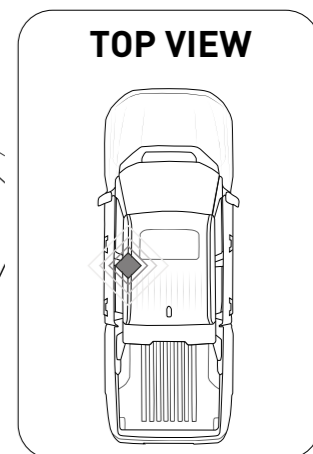
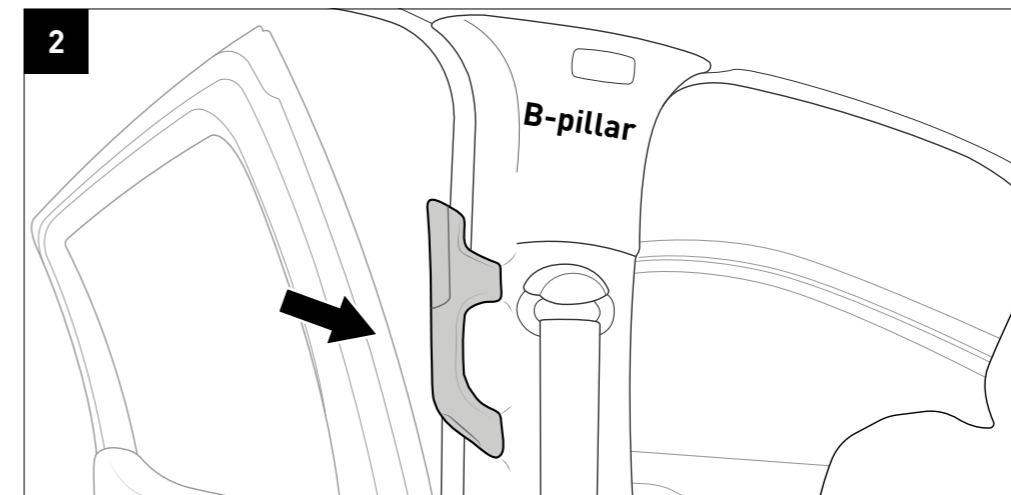
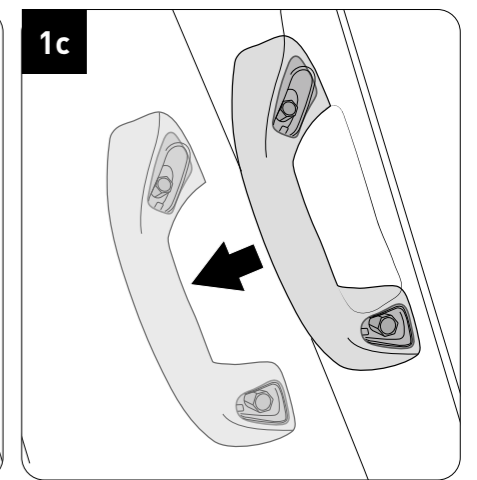
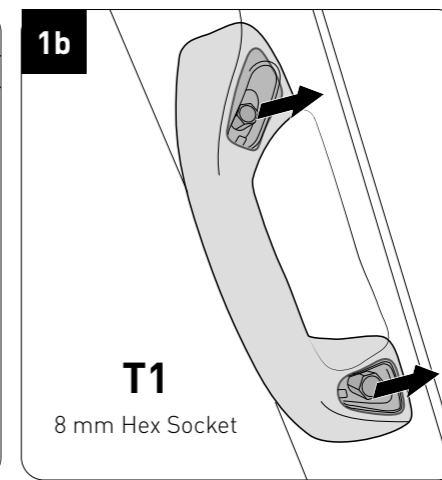
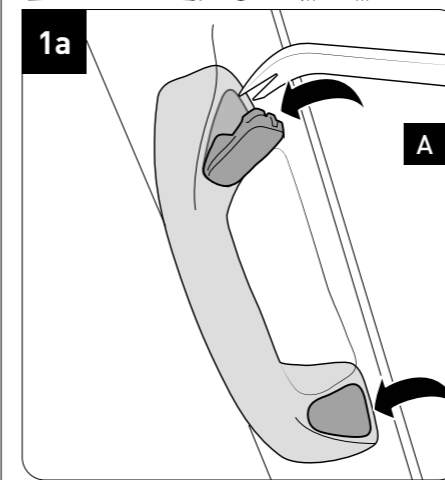
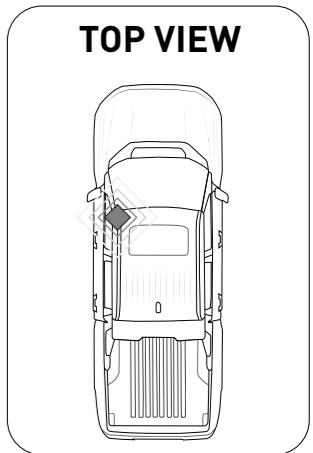


NOTE: Roof lining drop requires safe storage of removed parts, for ease of re-fitment.

INTERNAL ROOF LINING DROP

P1 1 Remove grab handles by removing end caps and then bolts.

NOTE: Store all internal trimming and hardware in a safe location, for ease of re-fitment.



3 Remove **2x** bolts with an **8mm** socket. Remove the pull handle.

TOP VIEW

3a

3b

3c **T1**
8 mm Socket

4 Remove **both** visors.

4a

NOTE: Swivel visors outwards to side windows for better access to connectors.

NOTE: Internal Clip Locations

4b

T2
Phillips Head Screwdriver

4c

4d

5 Remove **FRONT Left** and **FRONT Right** visor roof clips. Insert a small **flathead screwdriver** into the bottom end of the clip and turn **90°** to remove it.

5a

T3
Flat Head Screwdriver

5b

T3
Flat Head Screwdriver

5c

REMOVE B-PILLAR COVER

6

TOP VIEW

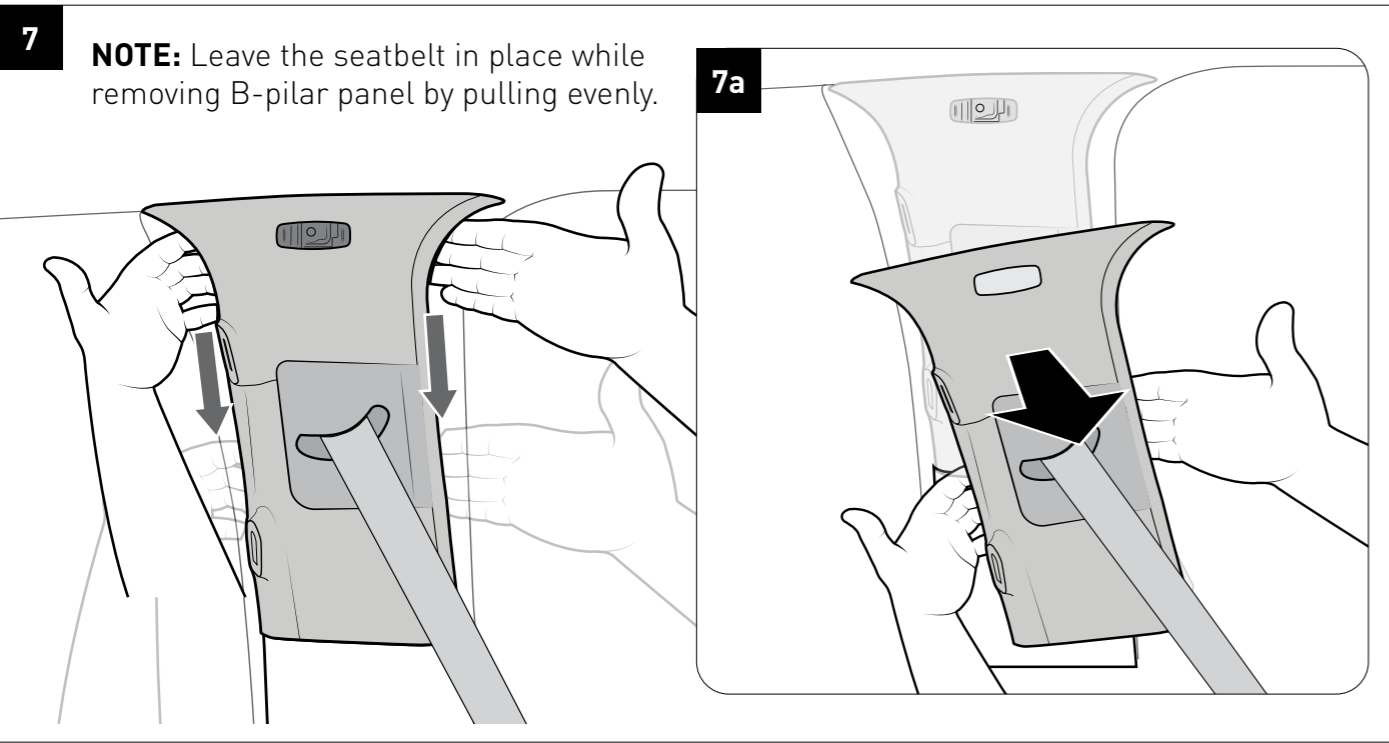
6a

T3
Flat Head Screwdriver

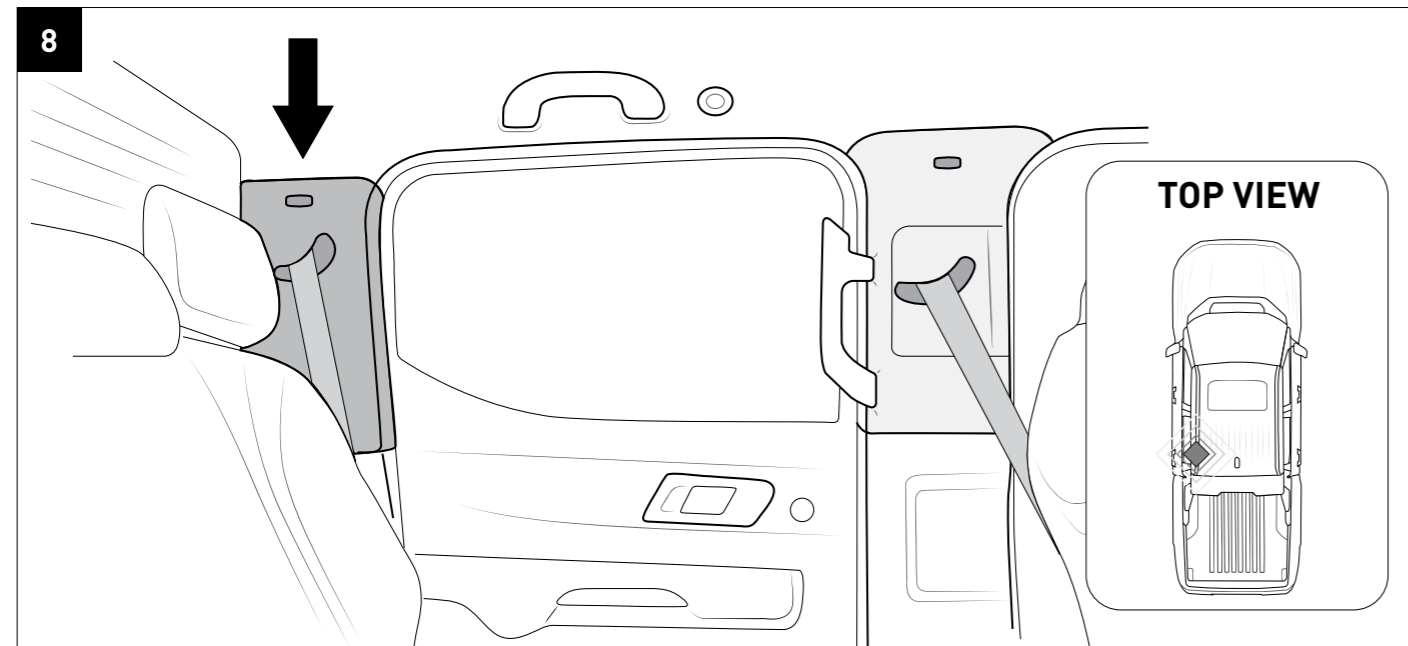
6b

6c

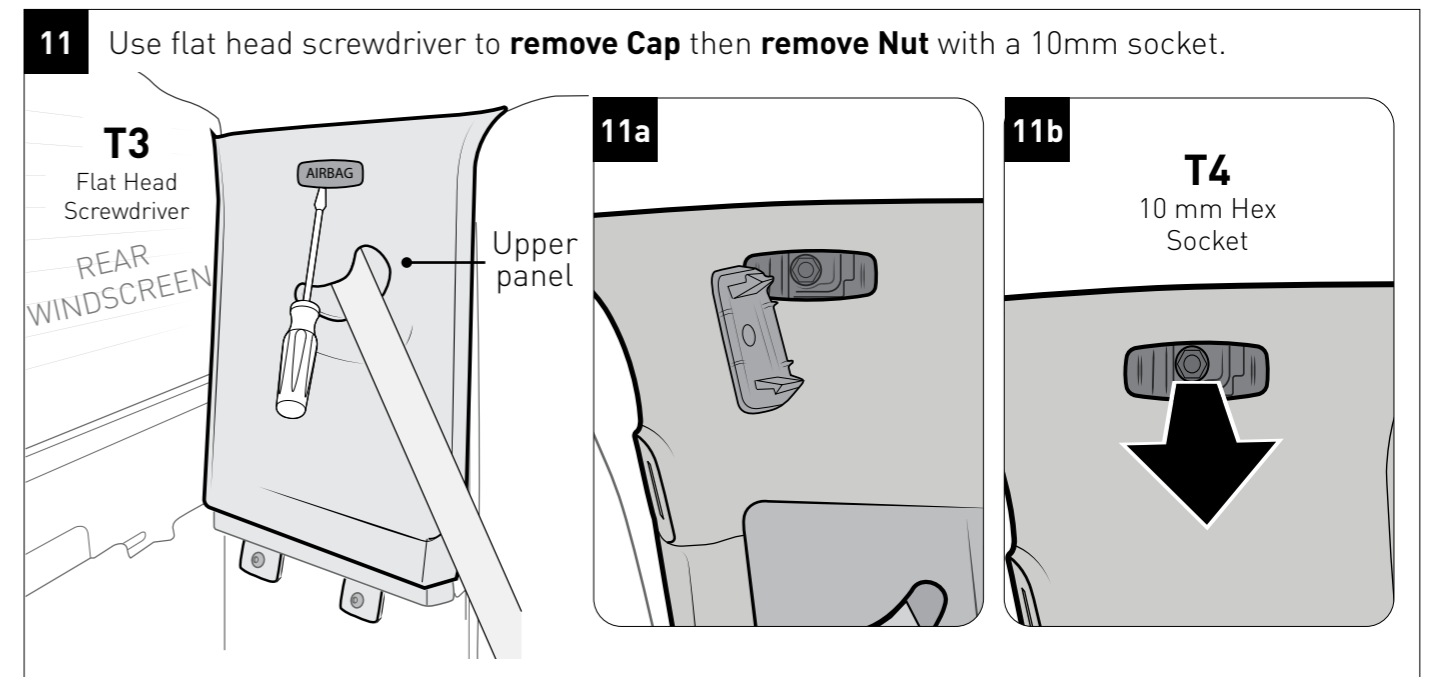
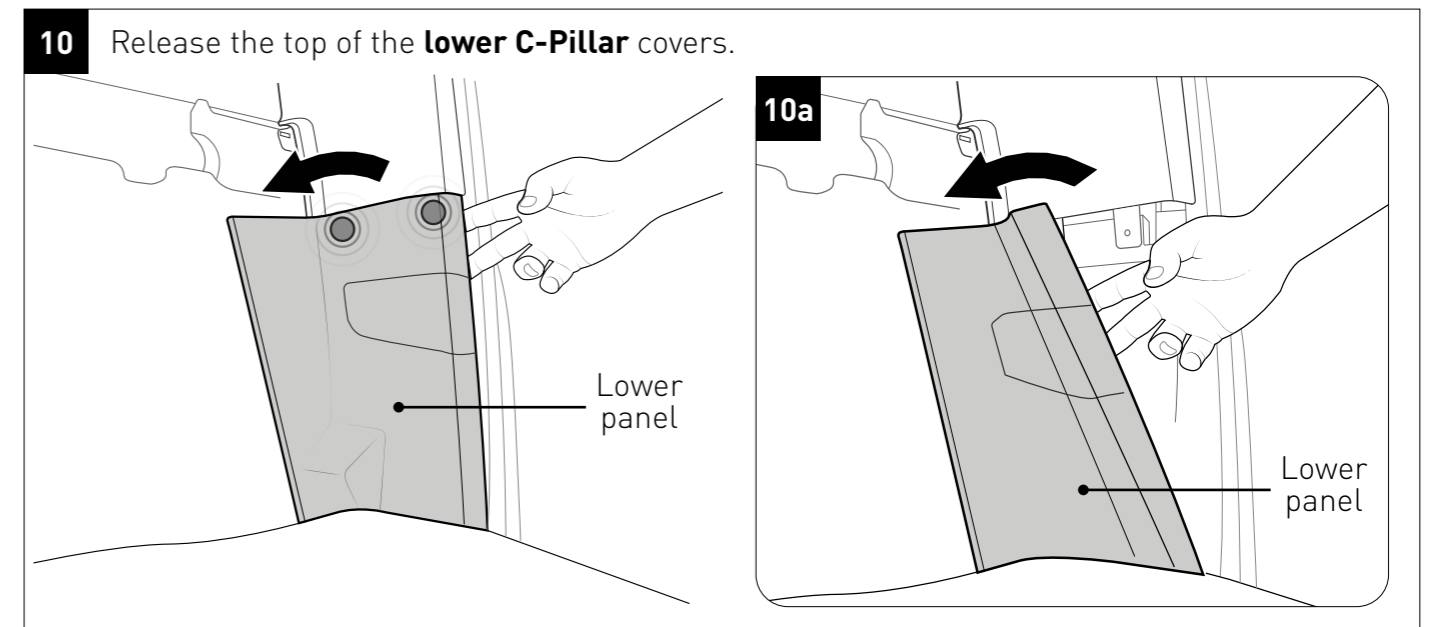
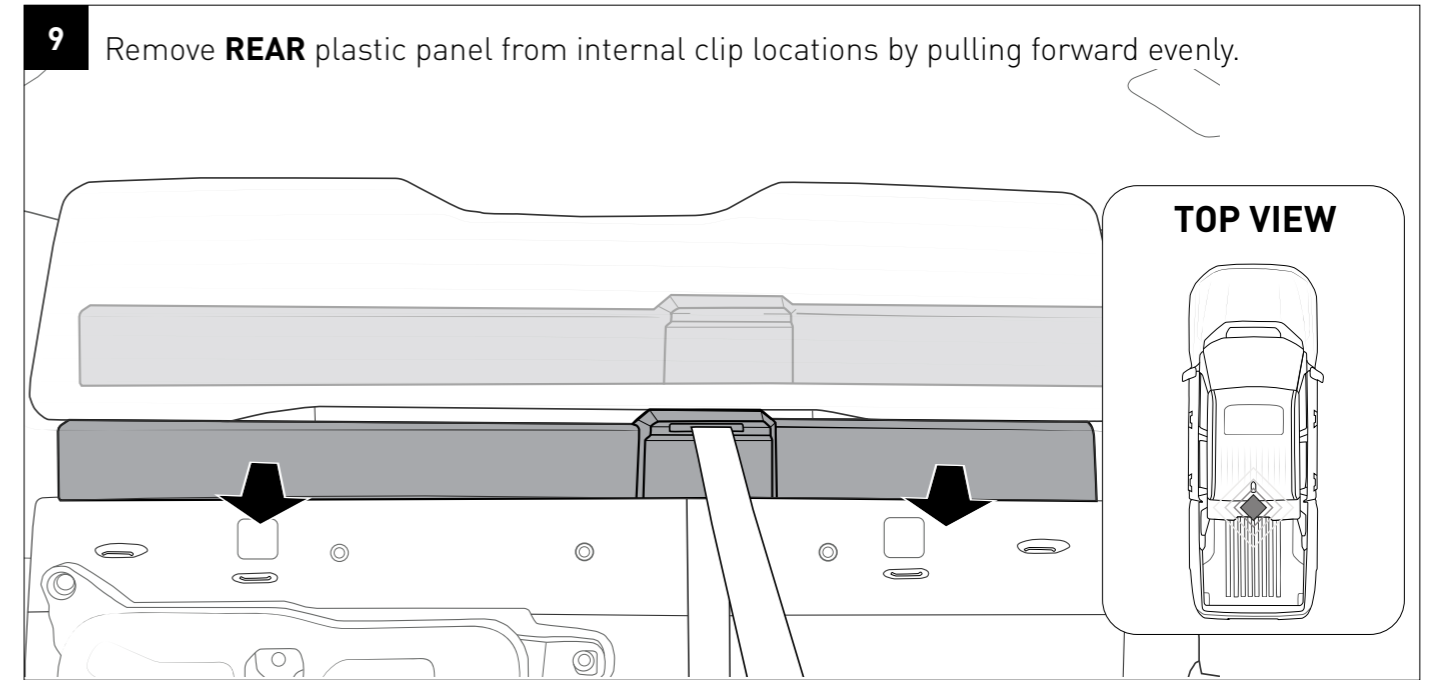
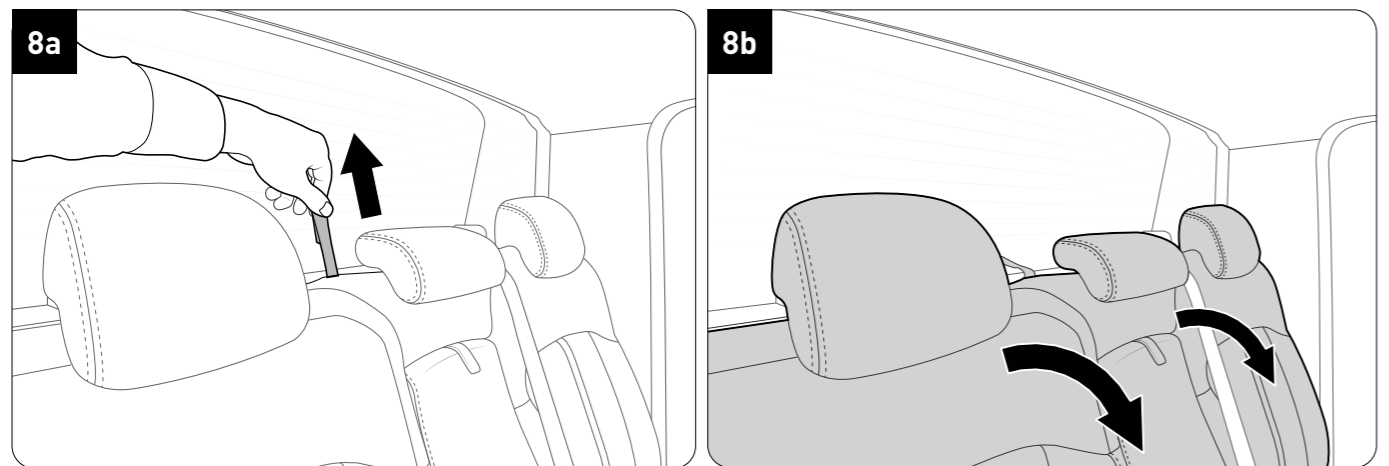
T4
10 mm Hex Socket



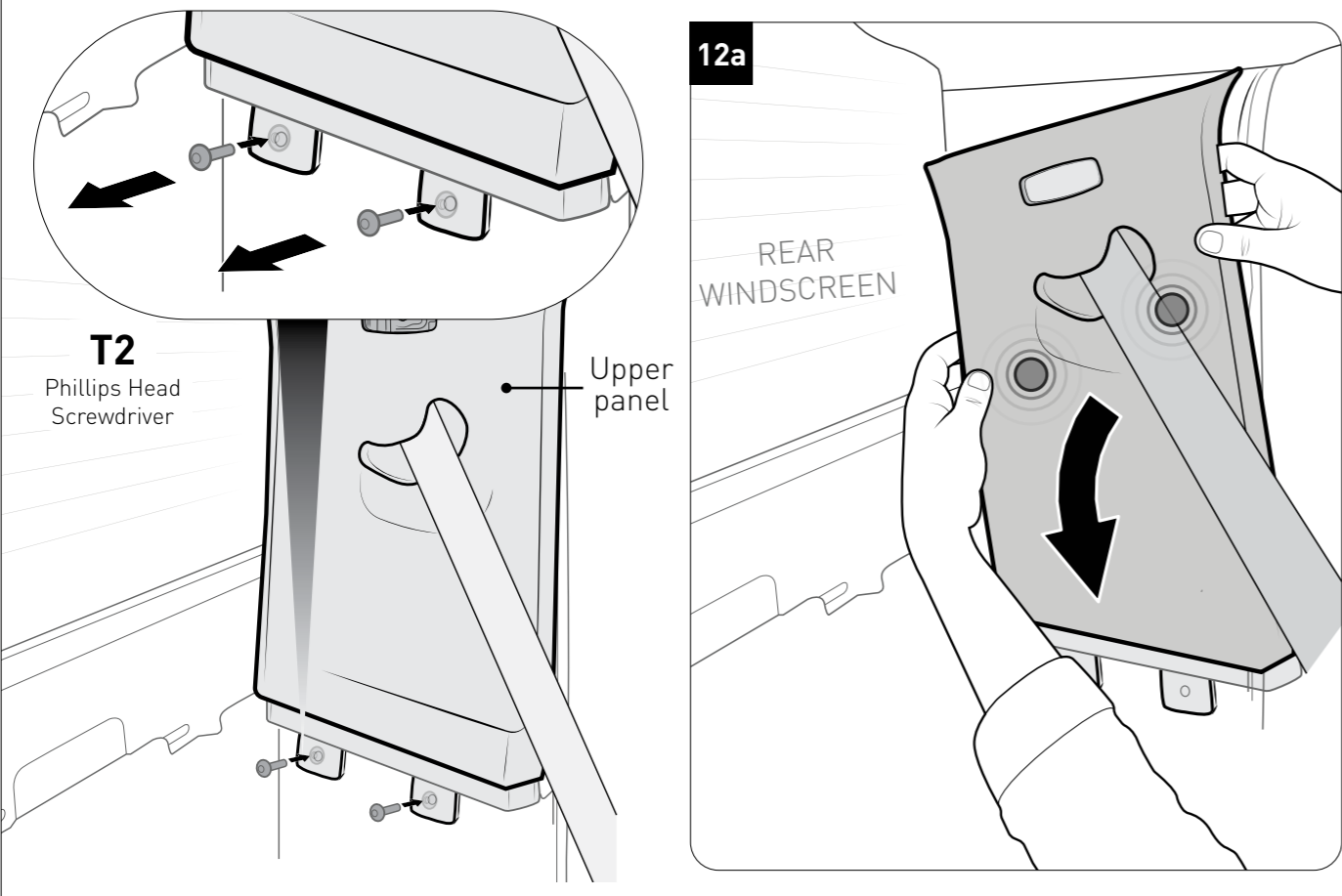
REMOVE C-PILLAR COVER



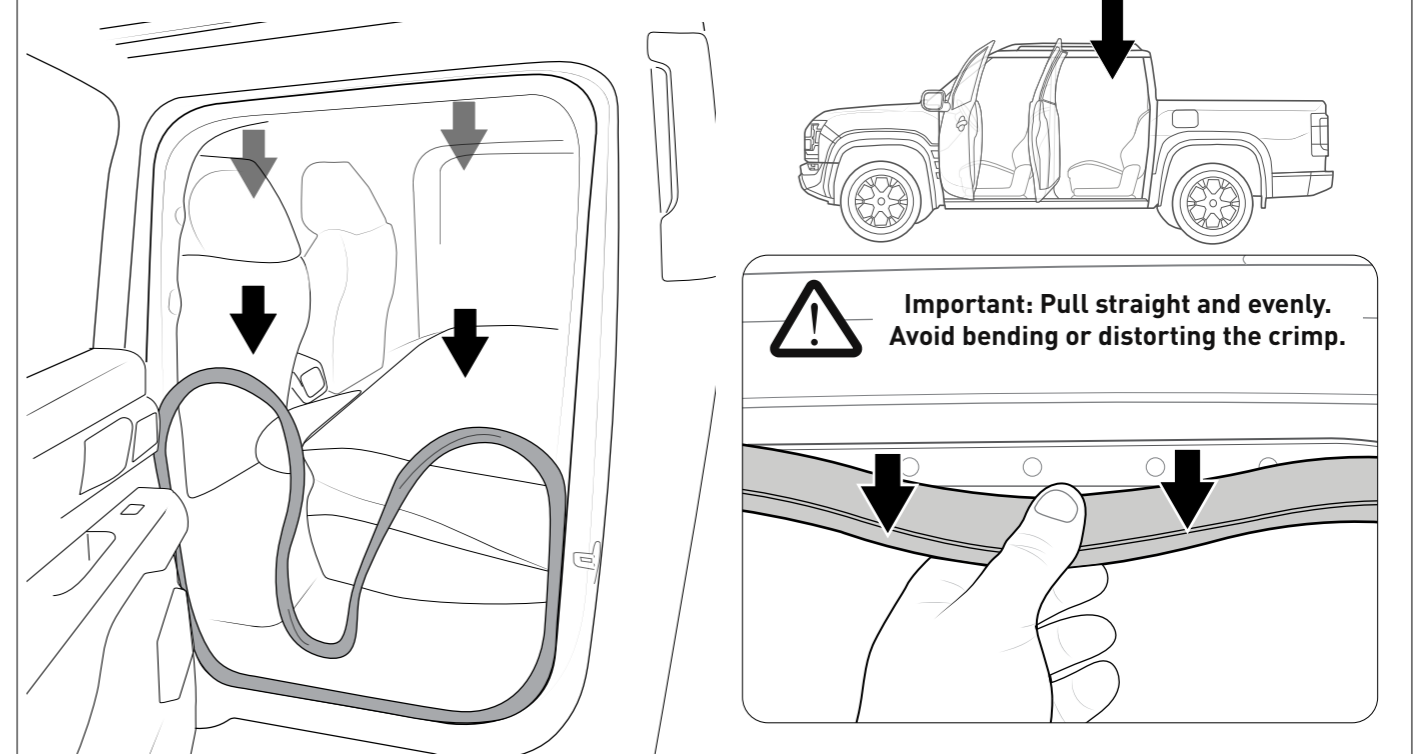
Fold down **REAR** seats.



12 Use a Phillips screwdriver to remove **2x bolts** from the bottom of the upper **C-pillar** trim.

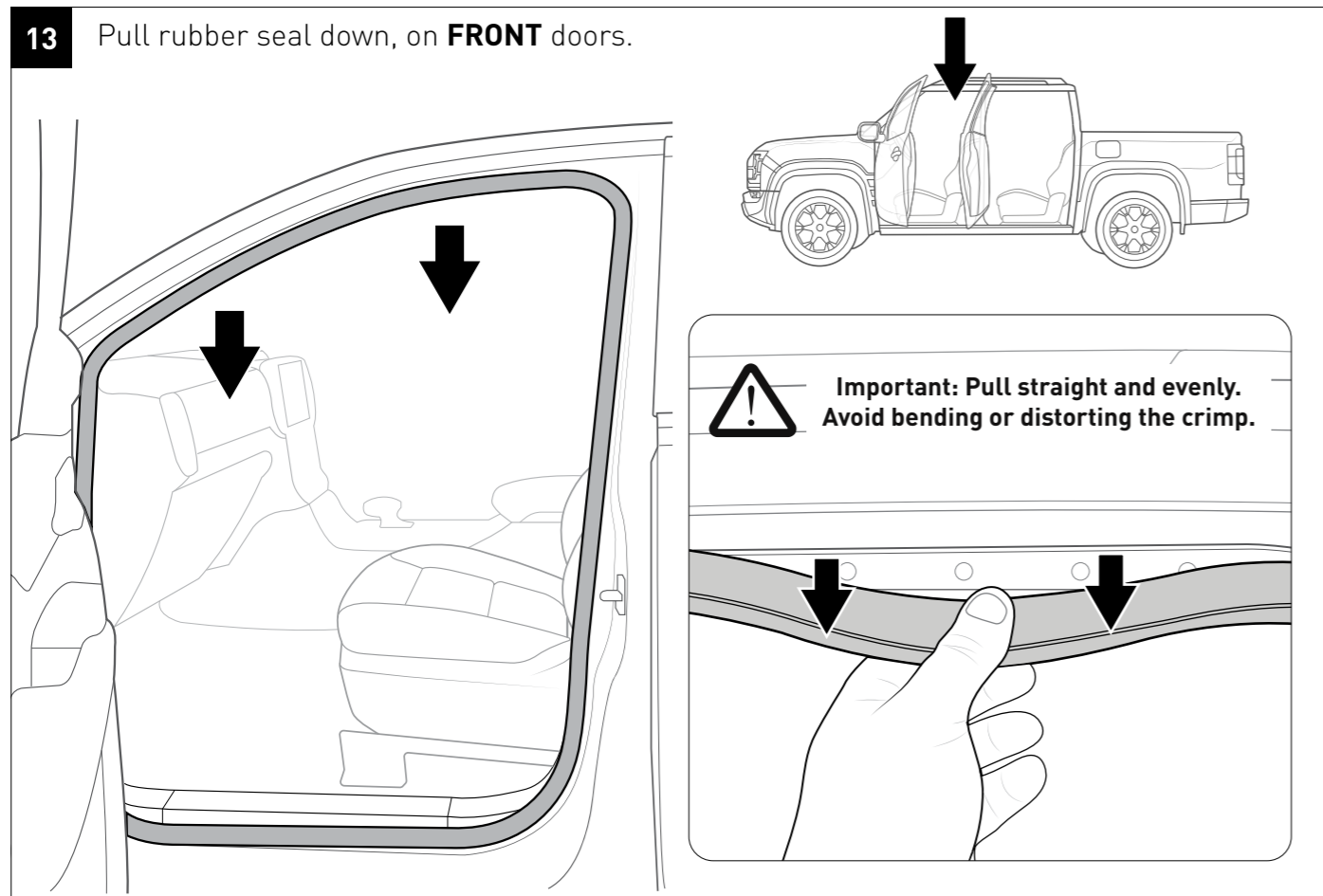


14 Pull rubber seal down, on **REAR** doors.



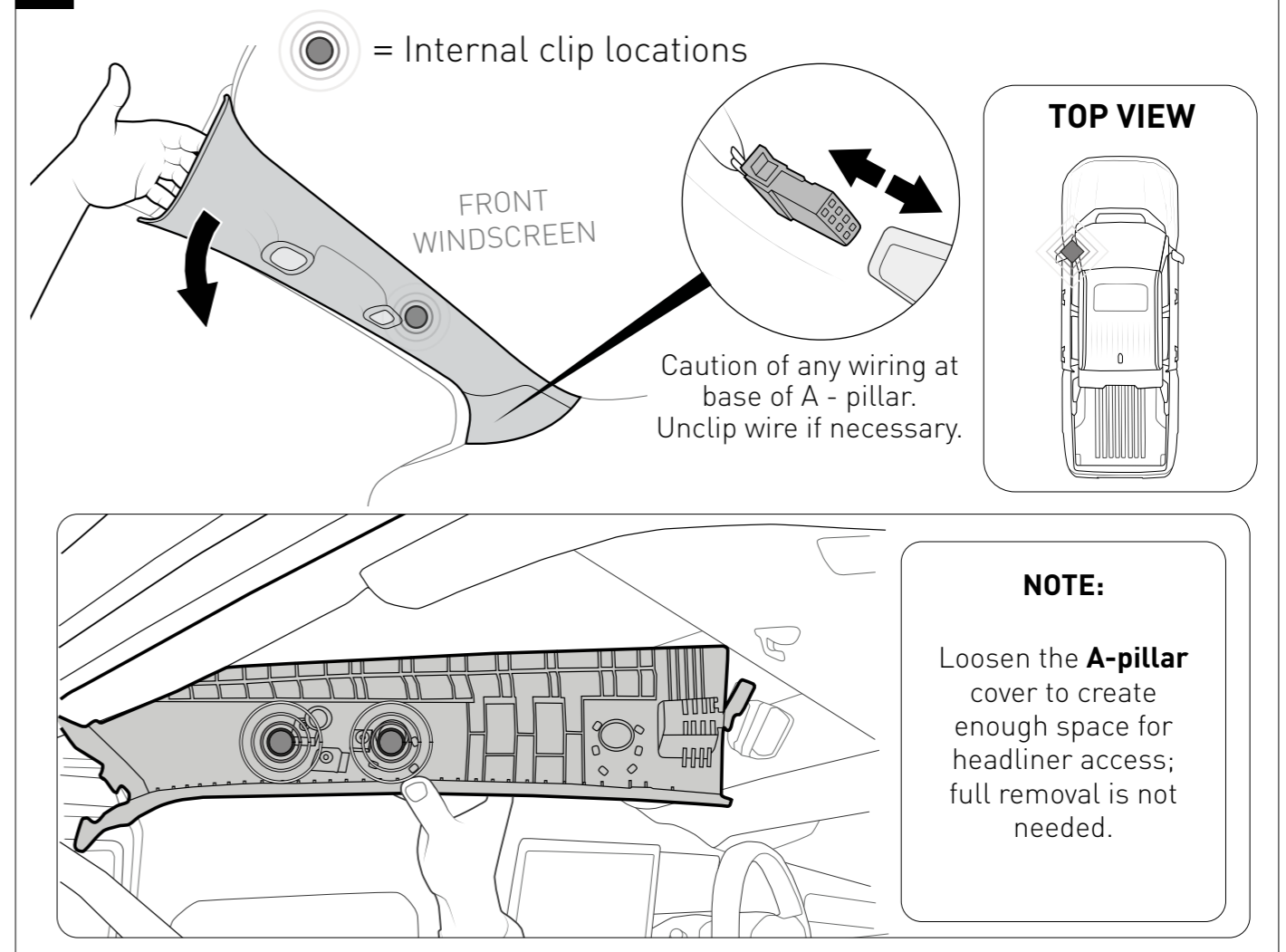
DOOR RUBBER TRIM REMOVAL

13 Pull rubber seal down, on **FRONT** doors.

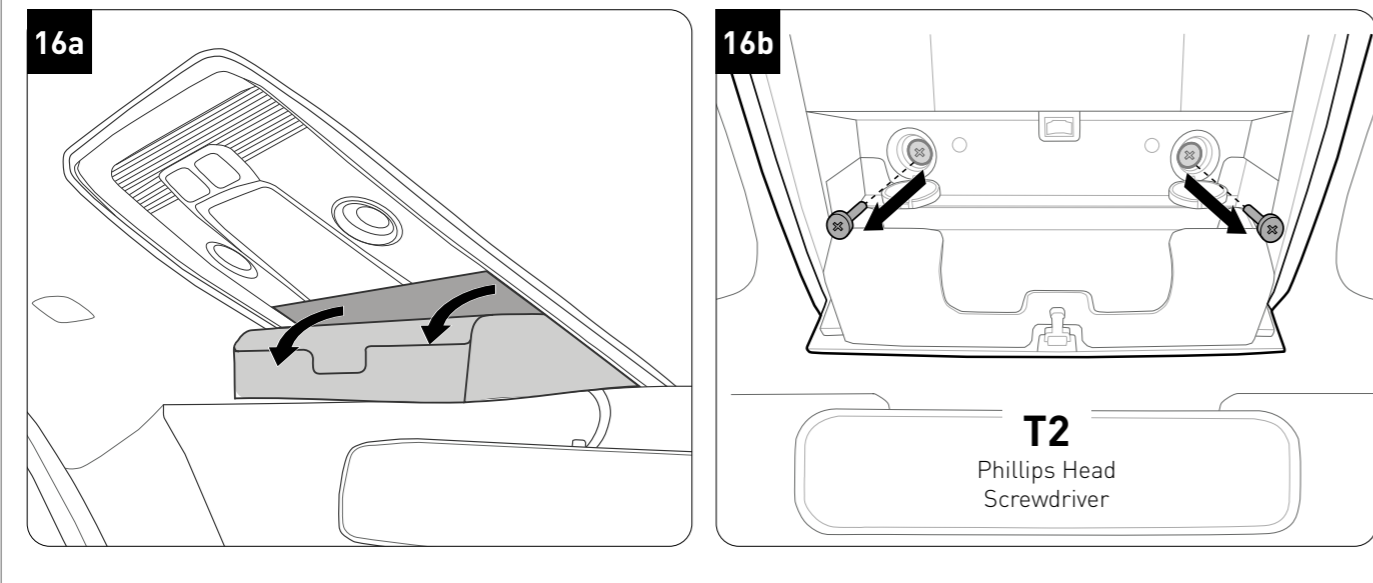


REMOVE A-PILLAR COVER

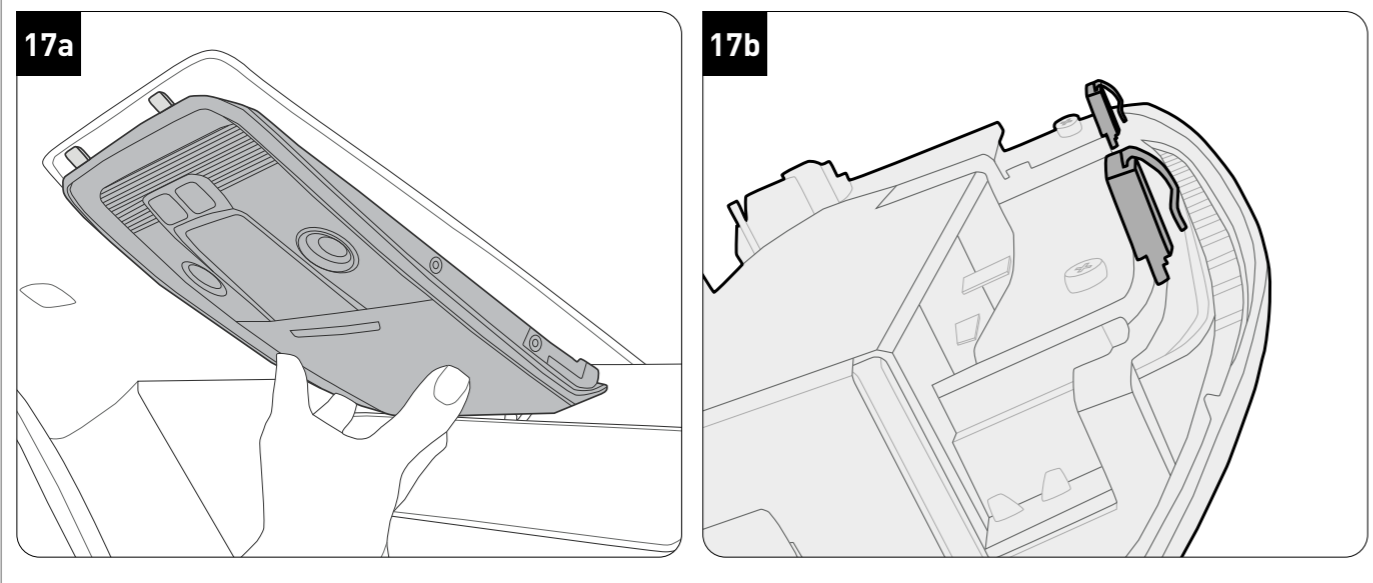
15 Unclip and remove **A-pillar** cover.



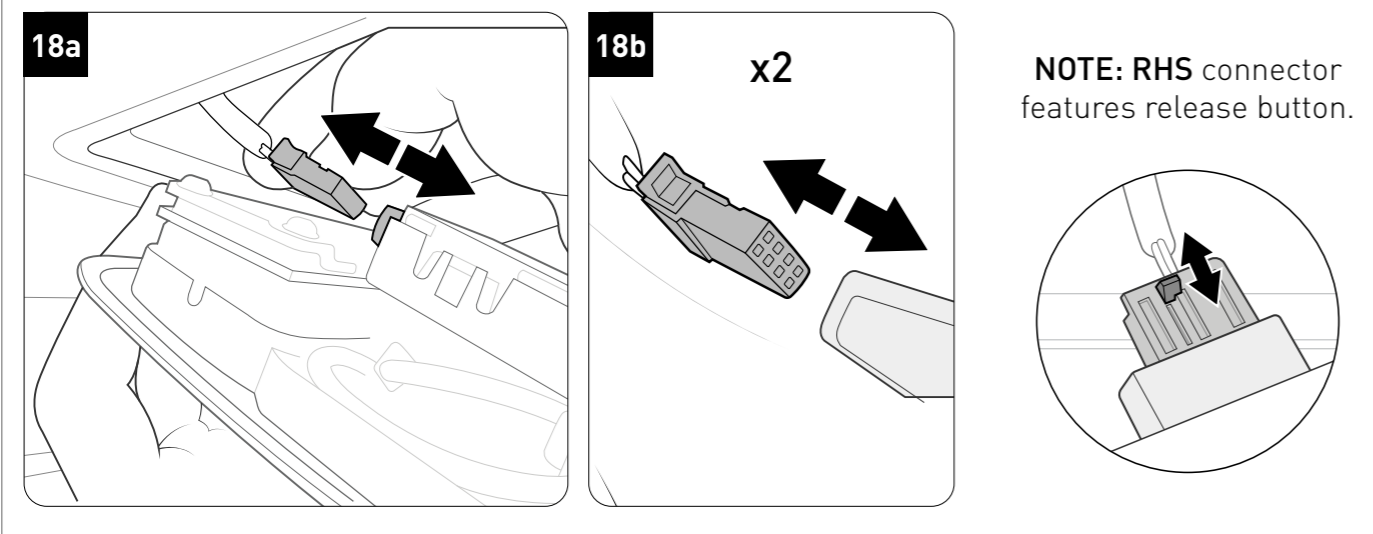
16 Open the sunglasses compartment, release the **tabs**, and remove the **screws**.



17 Pull down at the **FRONT** end to unclip the console.



18 Once console is unclipped carefully lower to access **two** wiring connectors towards the front. Unclip **both** wiring connectors.



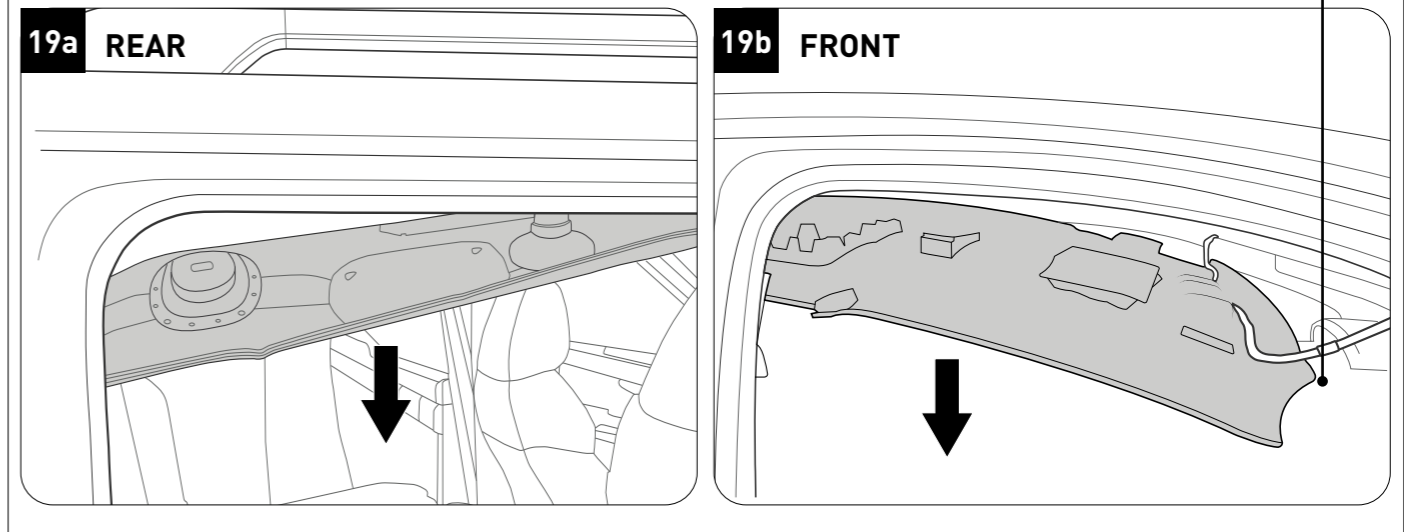
19 With one person standing on each side of the car behind the **B-Pillar**, simultaneously pull the headliner down to release.



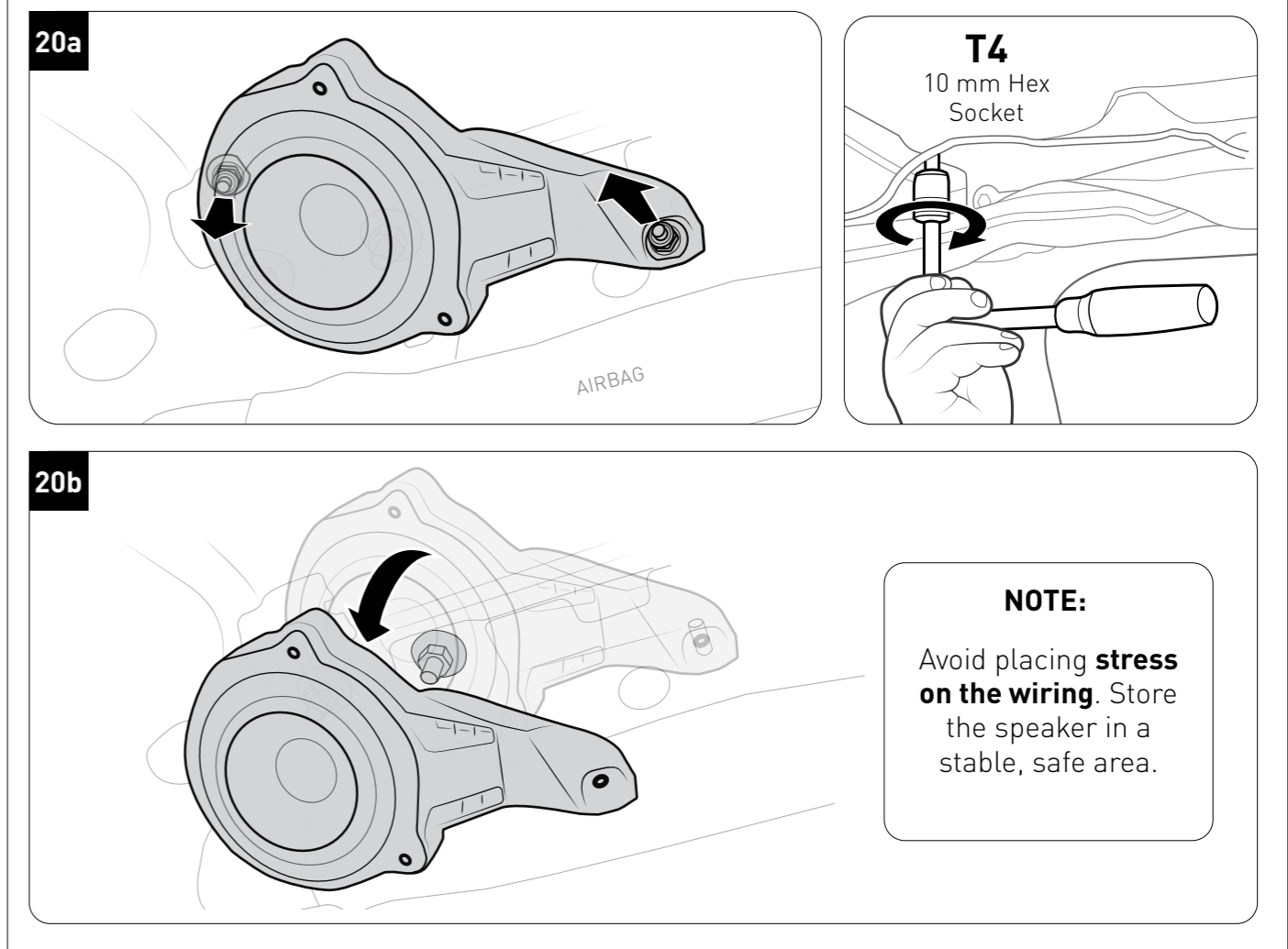
NOTE: Front seats can be positioned/reclined so that the headliner rests on the top of front seat headrests.

NOTE: Drop the headliner approximately 100mm, supporting it on the headrests.

Do **not** tug downwards on **FRONT** wiring.



20 Remove **2x** nuts on the speaker using a **10mm socket**.

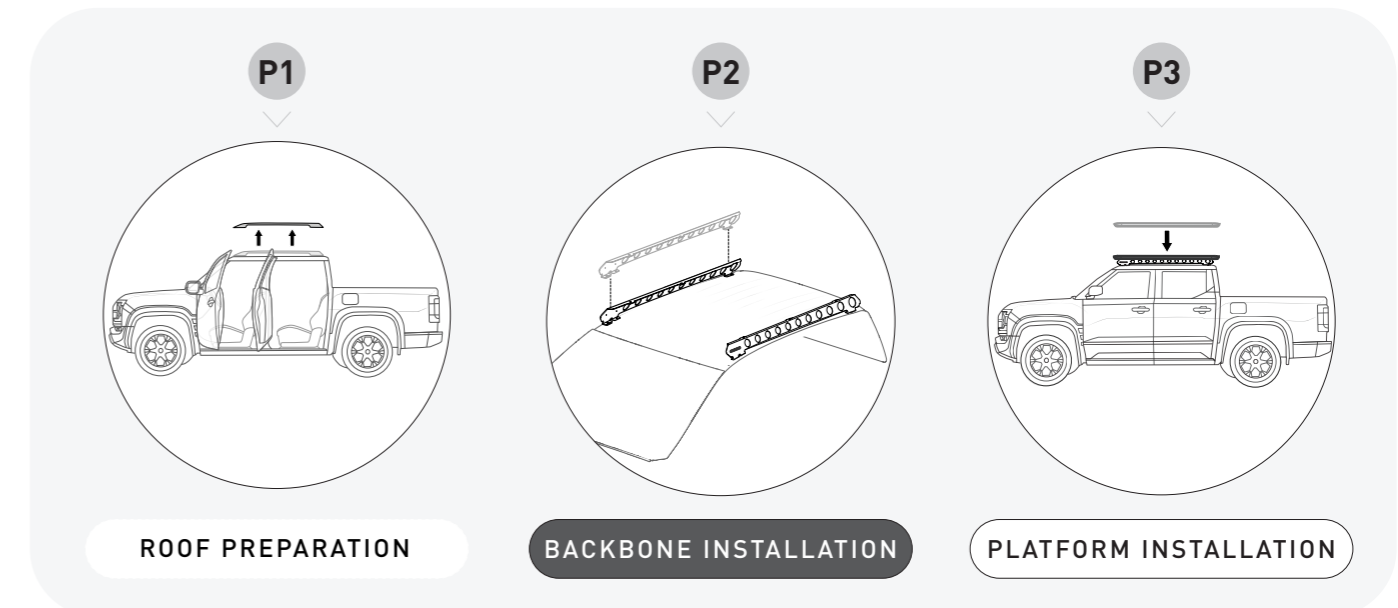
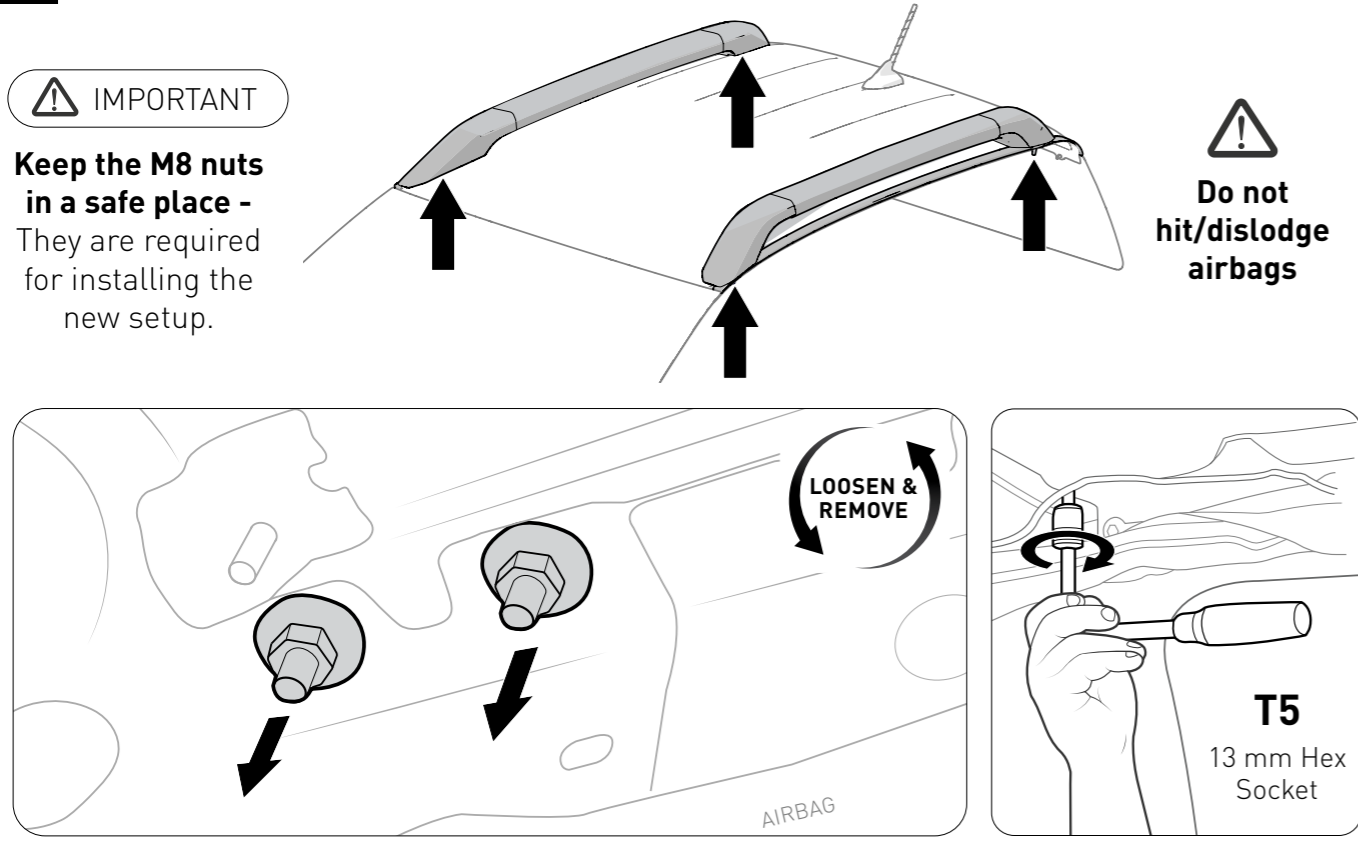


REMOVE FACTORY RAIL

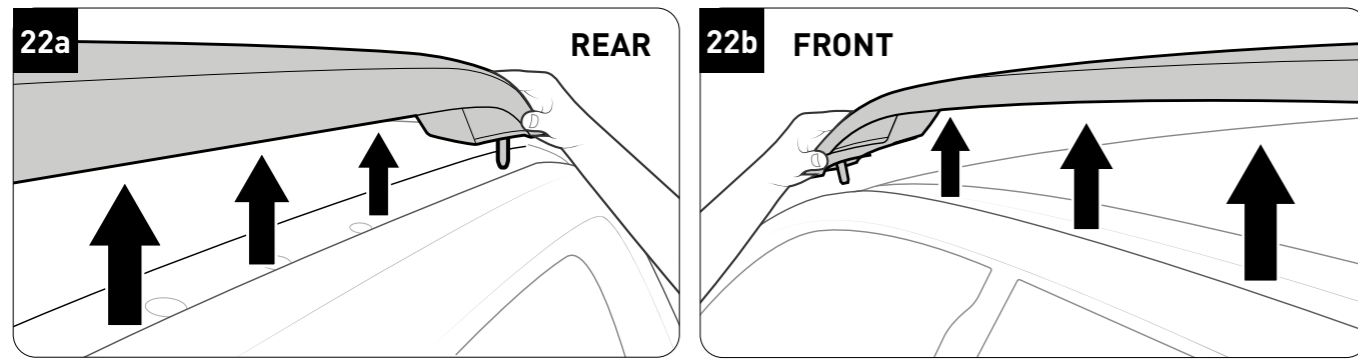
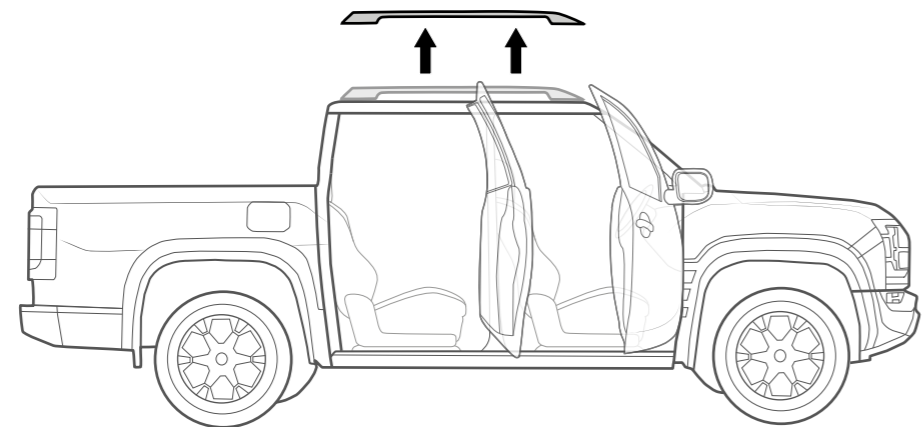
21 Loosen and remove the internal **13mm nuts** securing the roof rail connection points.

IMPORTANT
Keep the **M8 nuts** in a safe place - They are required for installing the new setup.

Do not hit/dislodge airbags



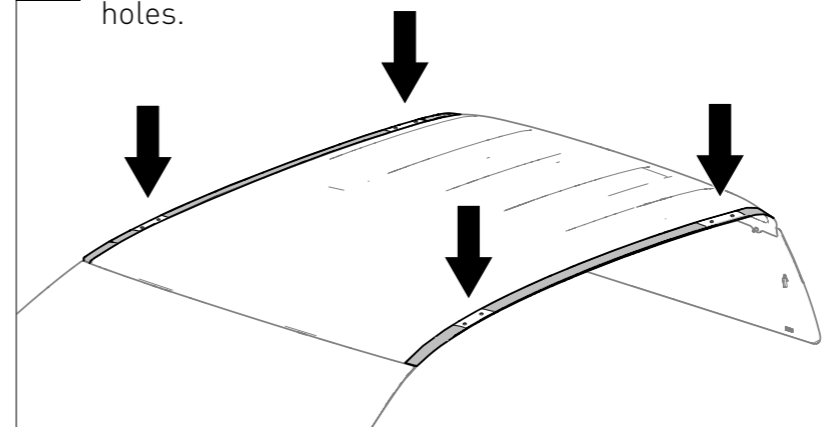
22 Completely **remove** rail in vertical motion, and **store rail and hardware** in a safe location.



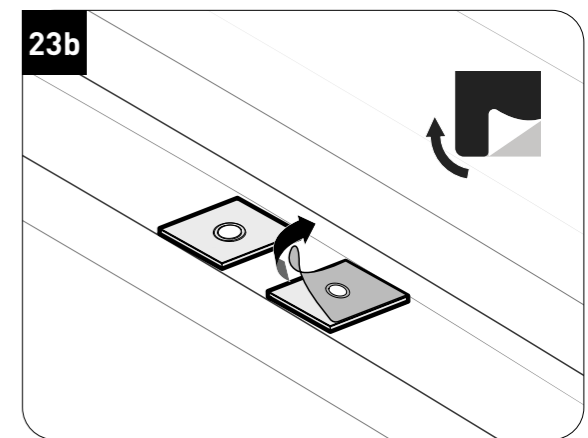
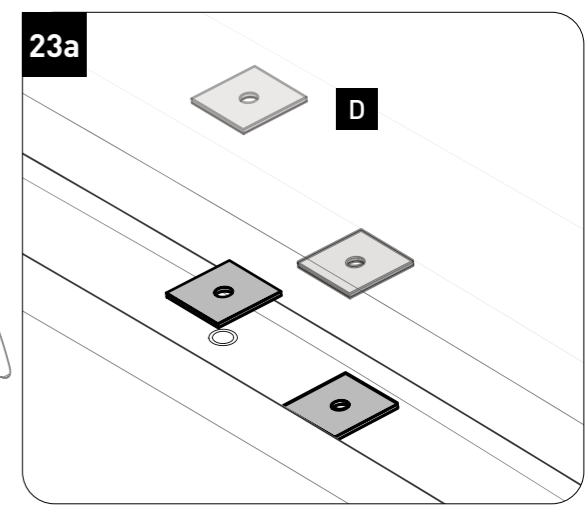
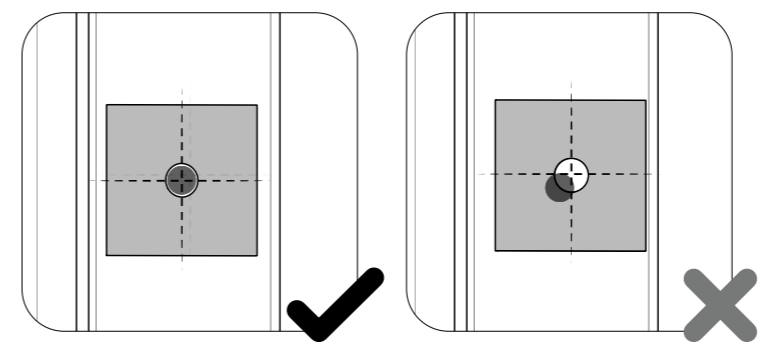
ROOF PREPARATION COMPLETE ✓

APPLY BUTYL PATCHES TO ROOF

P2 **23** Apply 8x butyl patches **D** to the roof mounting holes.



CAUTION: Butyl patches must be centred over the mounting holes to ensure proper sealing.



24a

Place **E** into both front and rear backbone legs

24b Carefully place backbone **with bolts** into roof mounting points, **FRONT** first, then **REAR**.

25 Using the 4x original roof rail nuts kept from Step **21**, finger tighten the backbone in place.

INSIDE VIEW

OUTSIDE VIEW

26 Secure the Backbone to the vehicle.

26a

hold bolt still

T7
13mm Spanner
Angled to clear roof

T5
13 mm Hex Socket

T6
75mm Ext.

26b

20Nm
15LB/FT

T5
13 mm Hex Socket

27 Repeat Steps **24** - **26** to opposite side of vehicle.

Ensure backbone fitment is secure before attaching Pioneer.

BACKBONE INSTALLATION IS COMPLETE ✓

P1

ROOF PREPARATION

P2

BACKBONE INSTALLATION

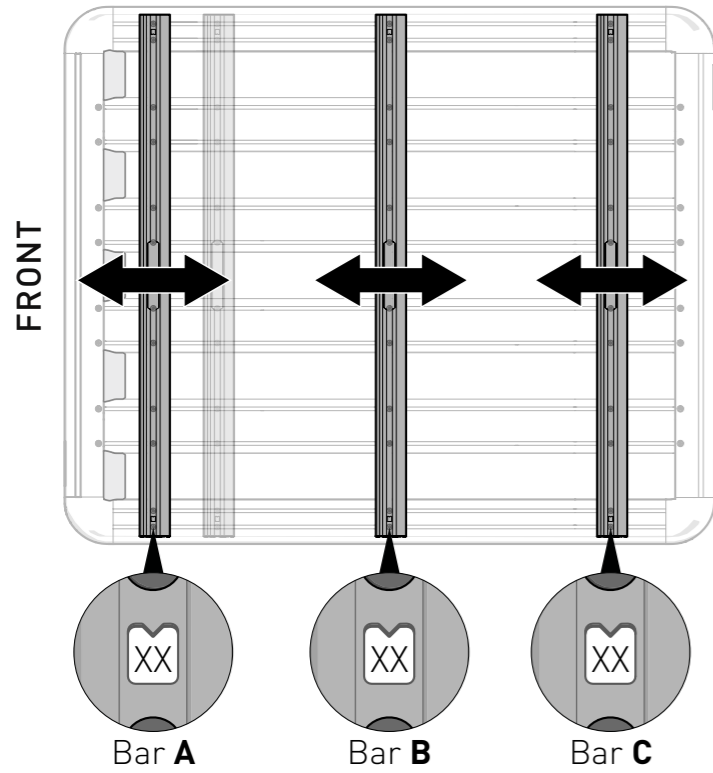
P3

PLATFORM INSTALLATION

PIONEER PLATFORM INSTALLATION *Refer to Pioneer Instructions*

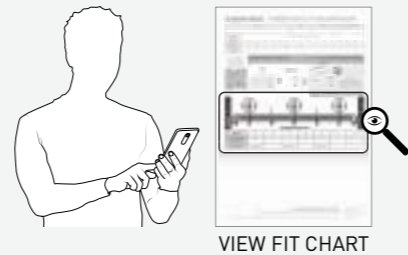
P3

28

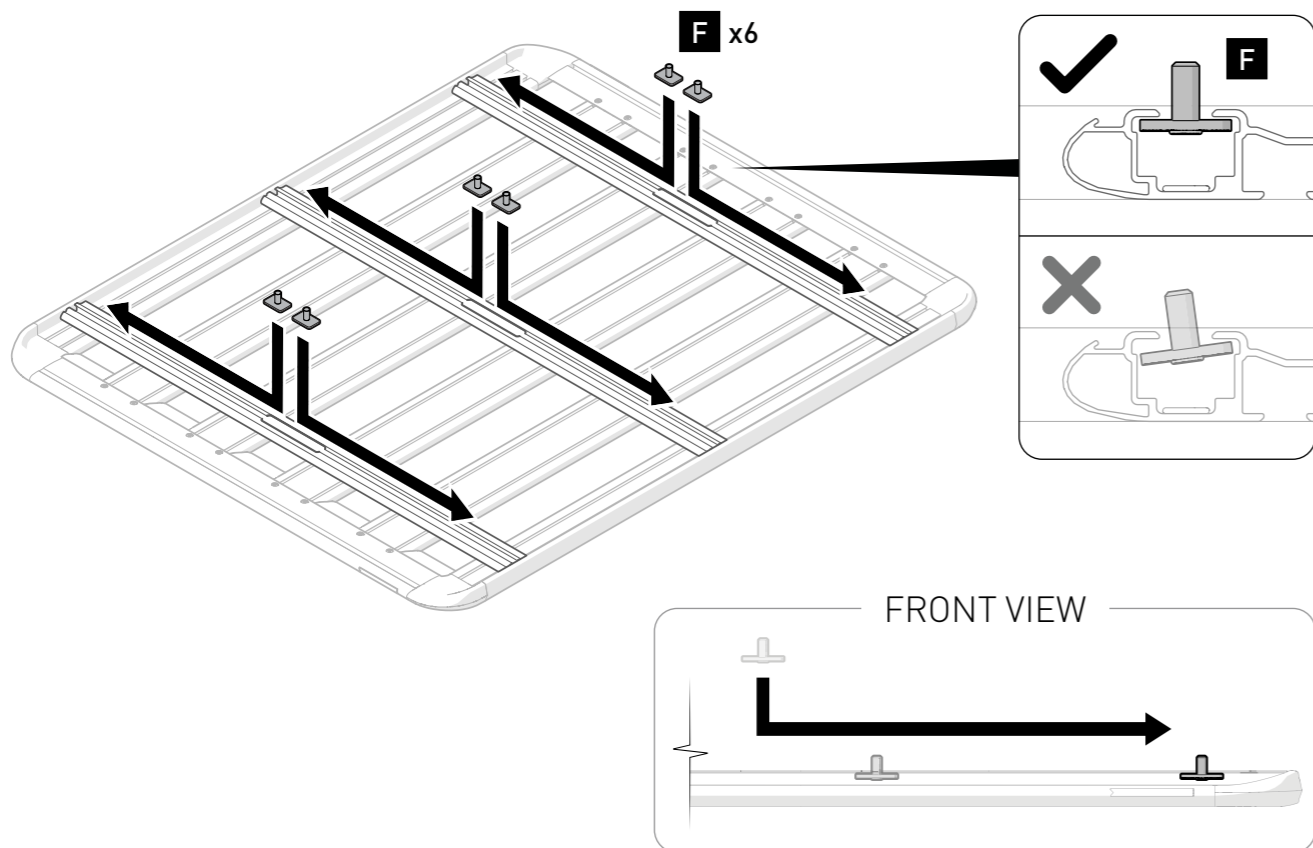


rhinorack.com/roof

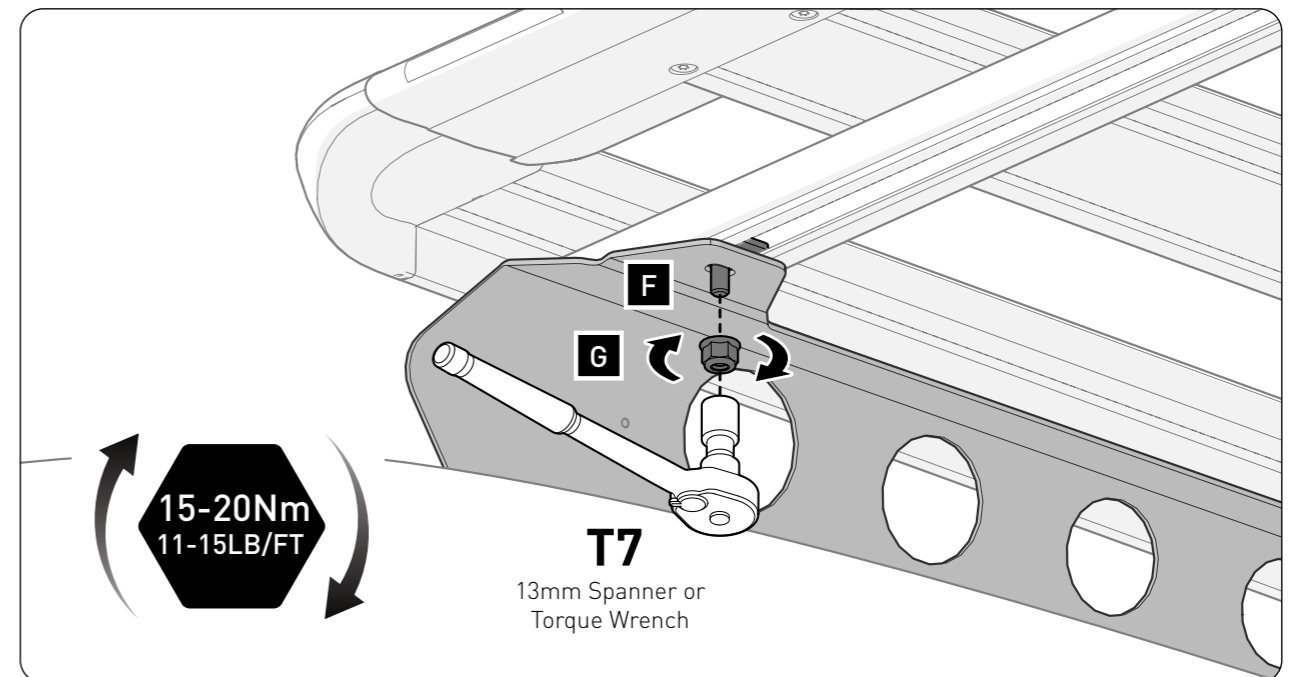
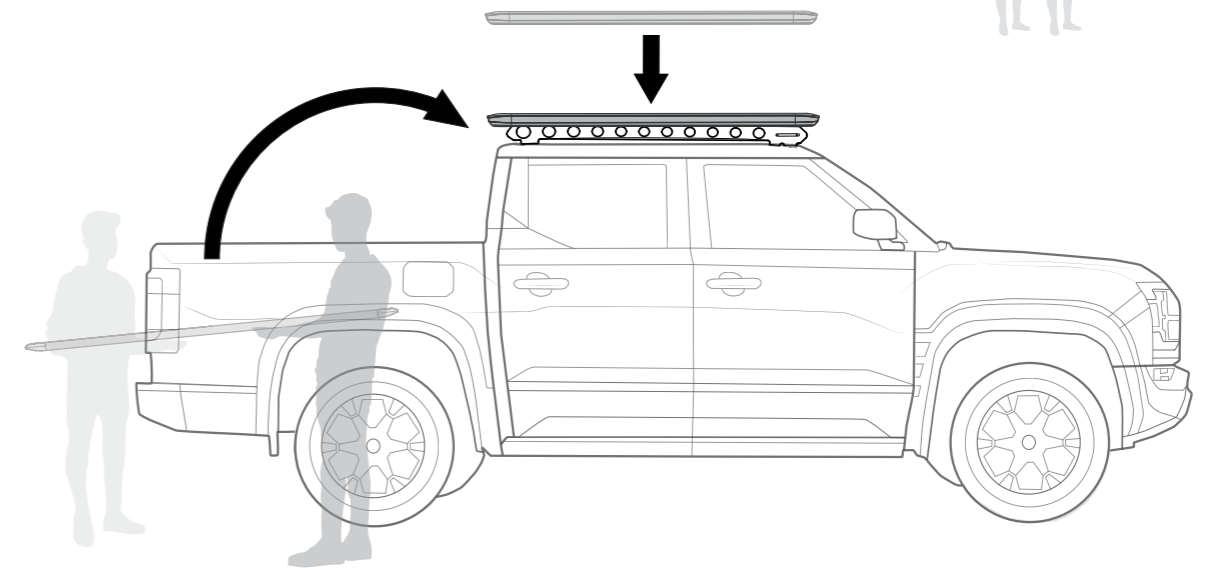
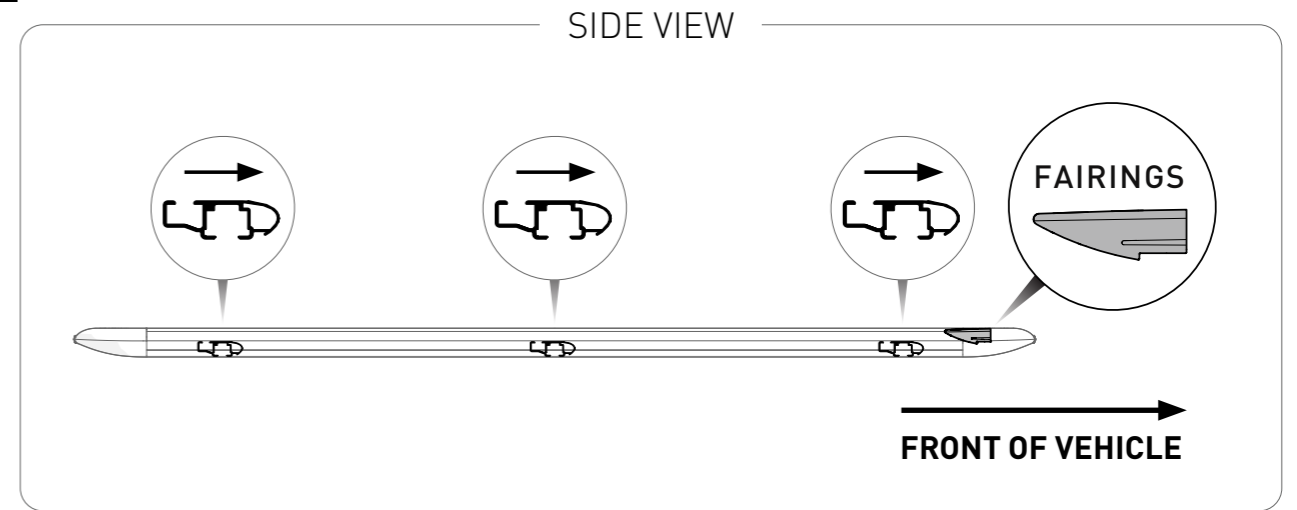
1. Complete **Fit my vehicle** journey
2. Select your **Product Solution**
3. Scroll down to **'Product Details'**
4. Select the **'INSTRUCTIONS'** tab to View the Fitting Chart
5. Space your Underbars to the dimensions provided.



29

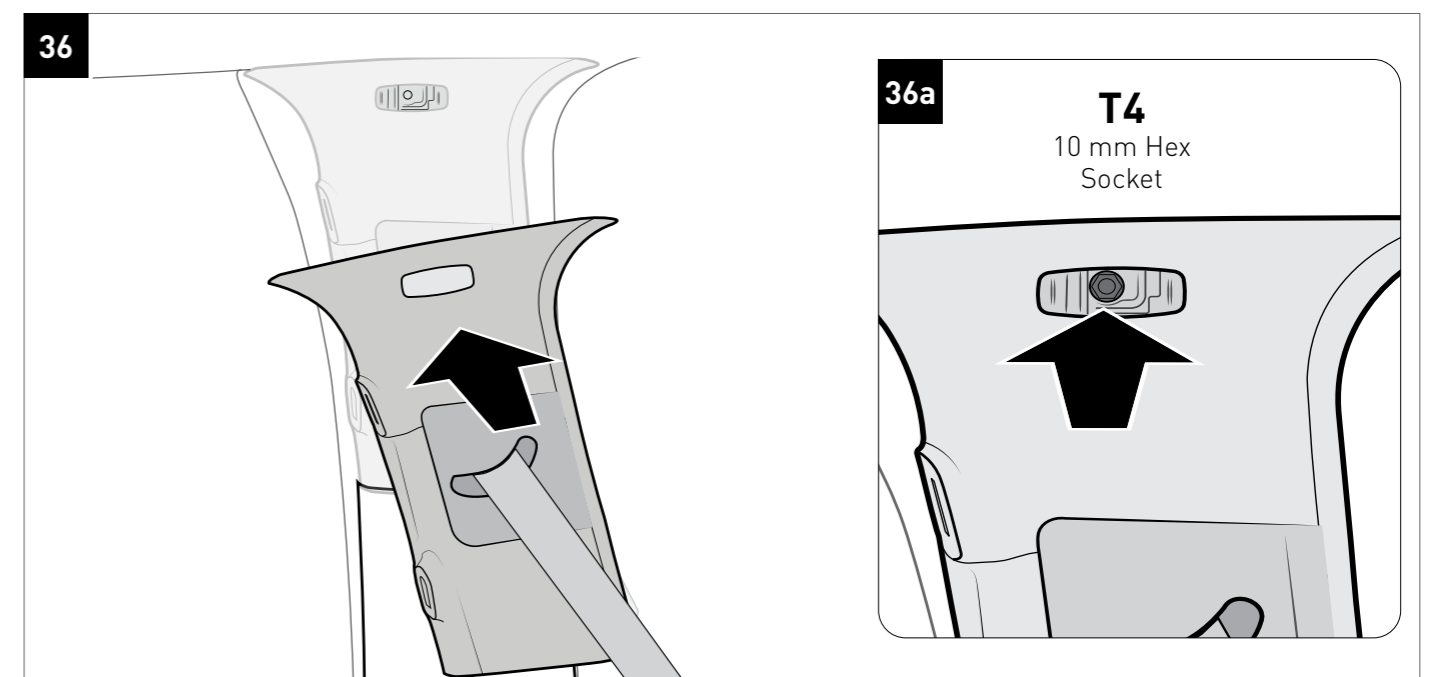
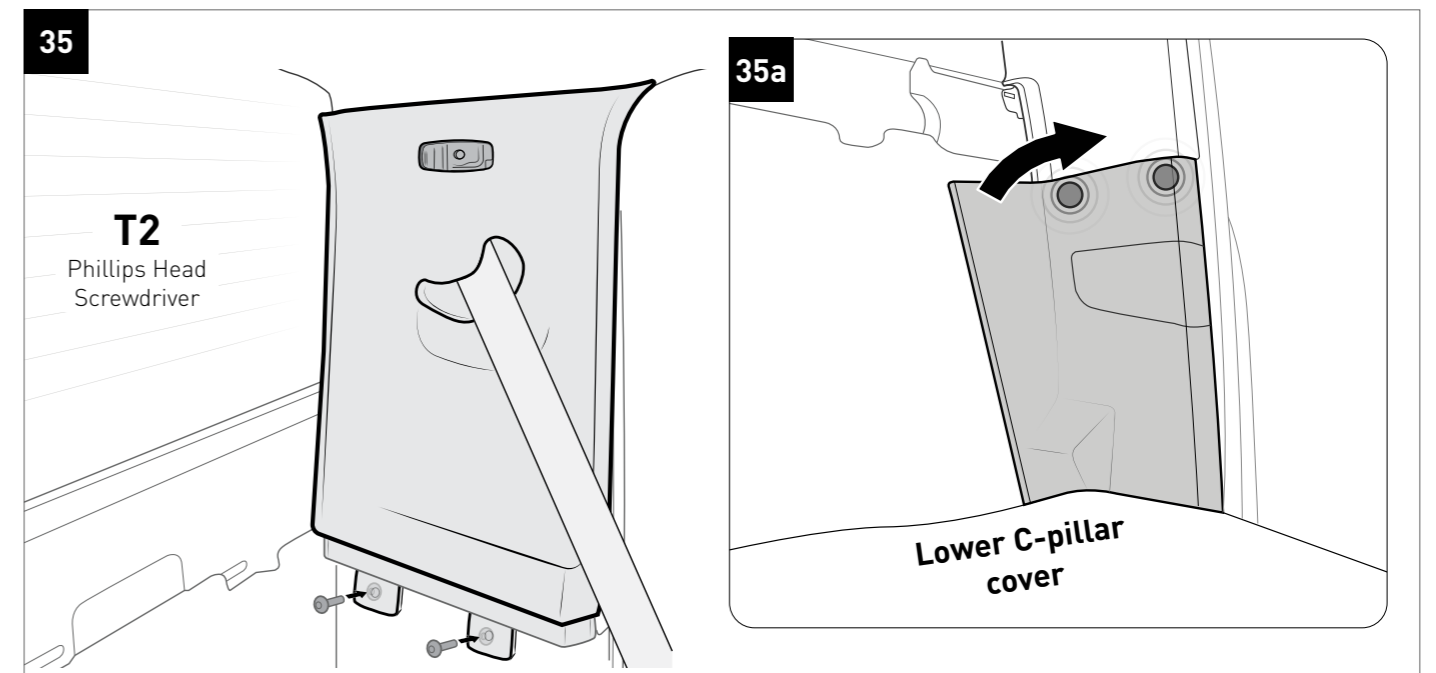
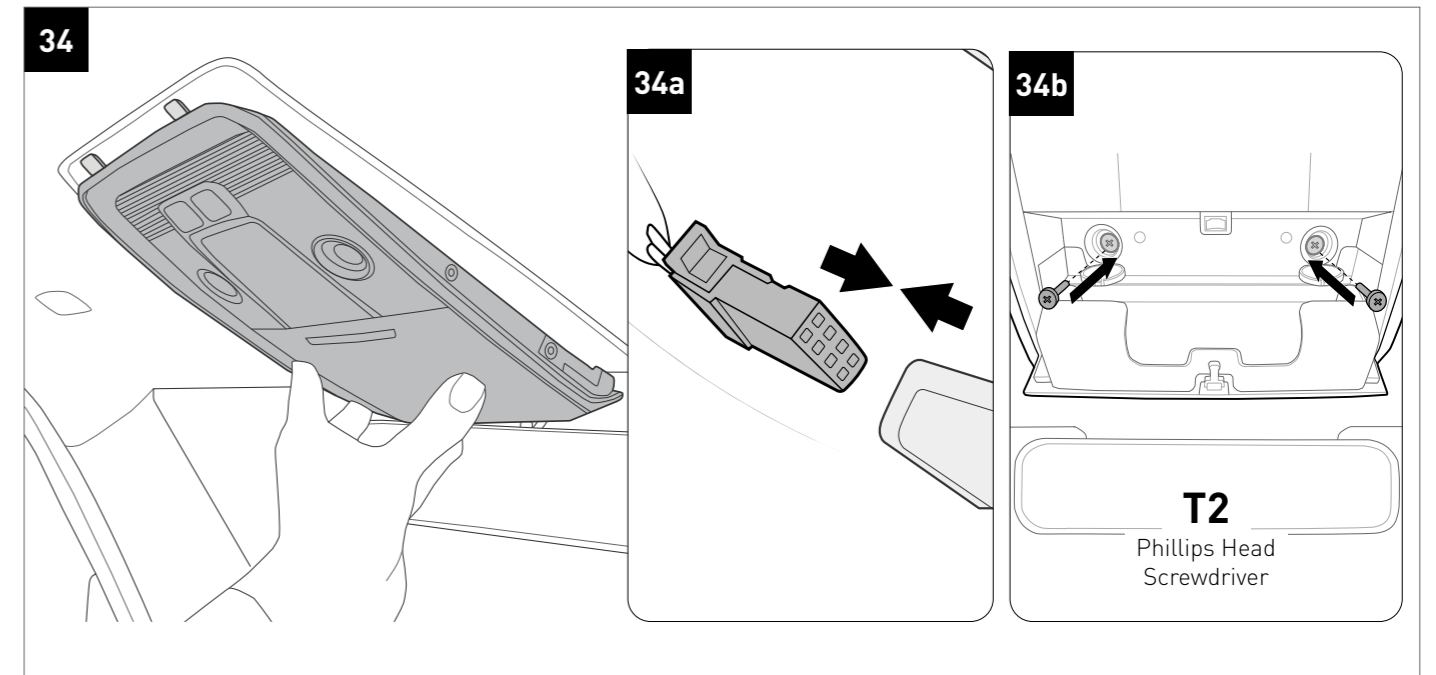
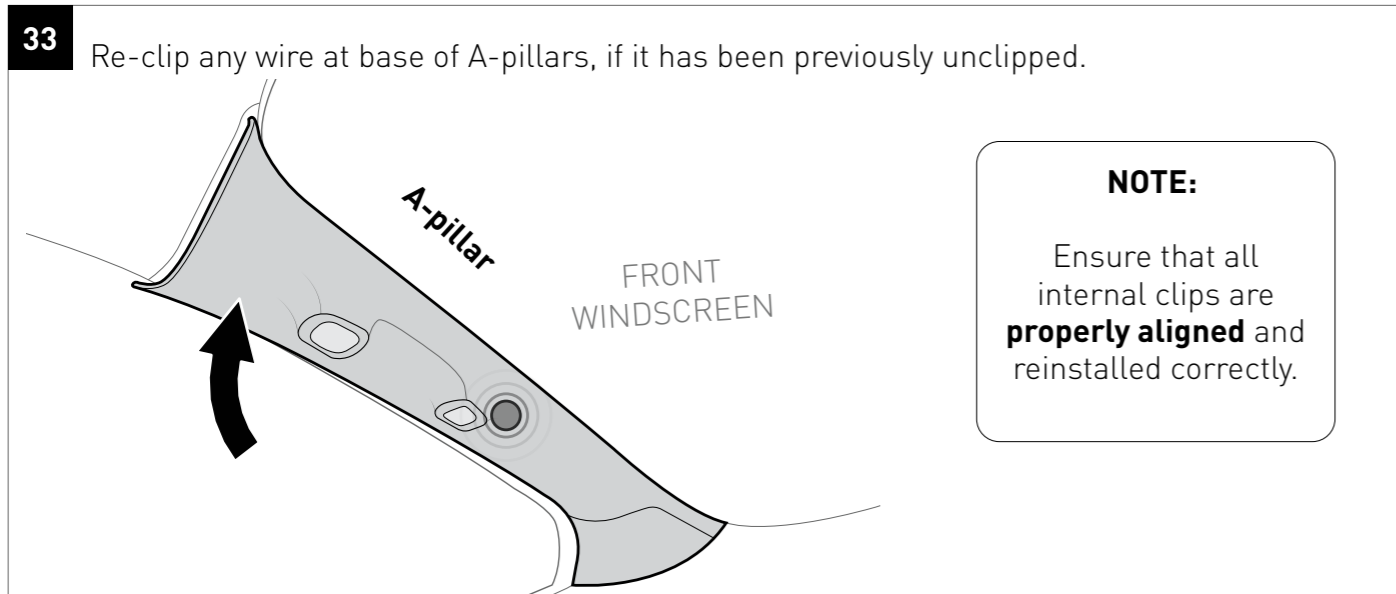
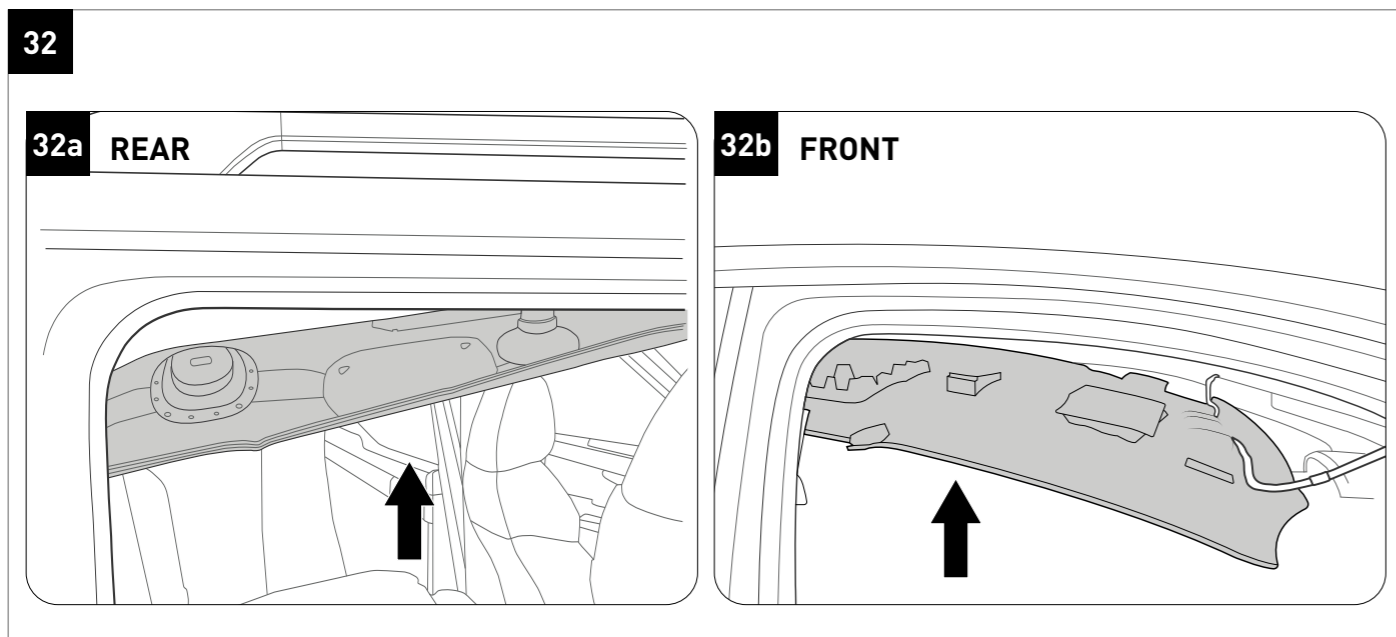
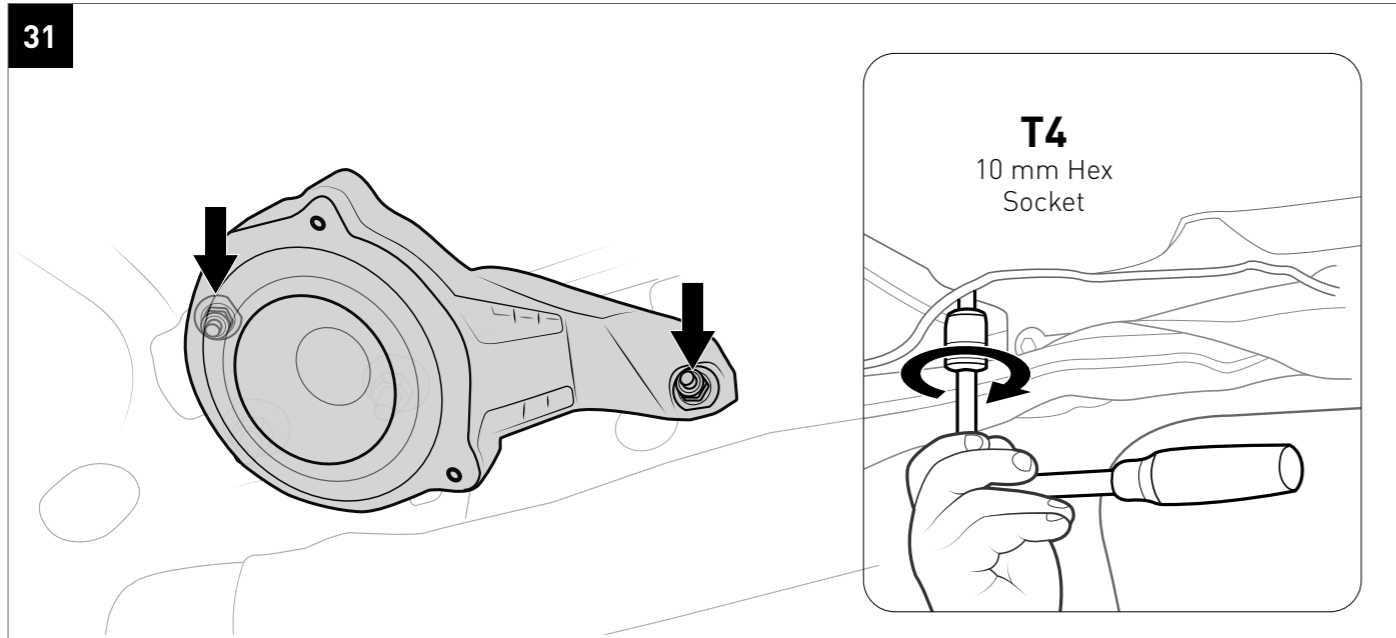


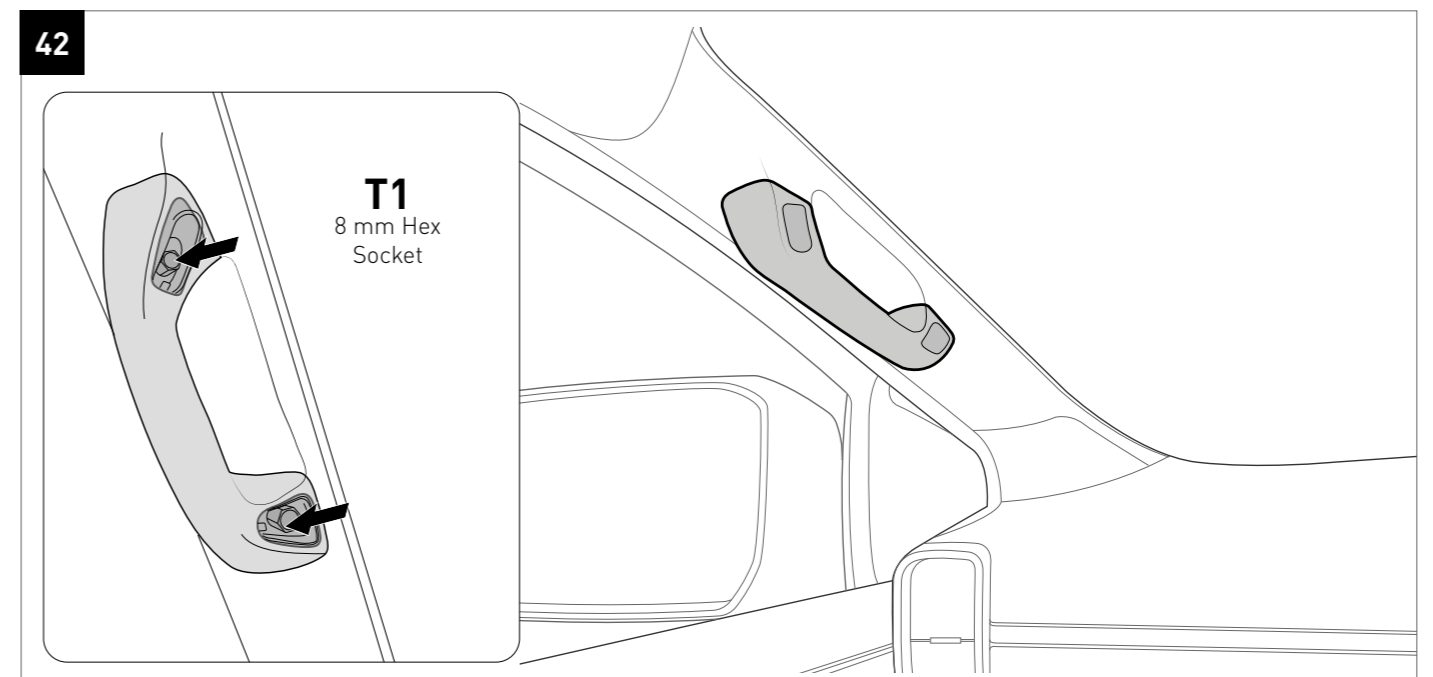
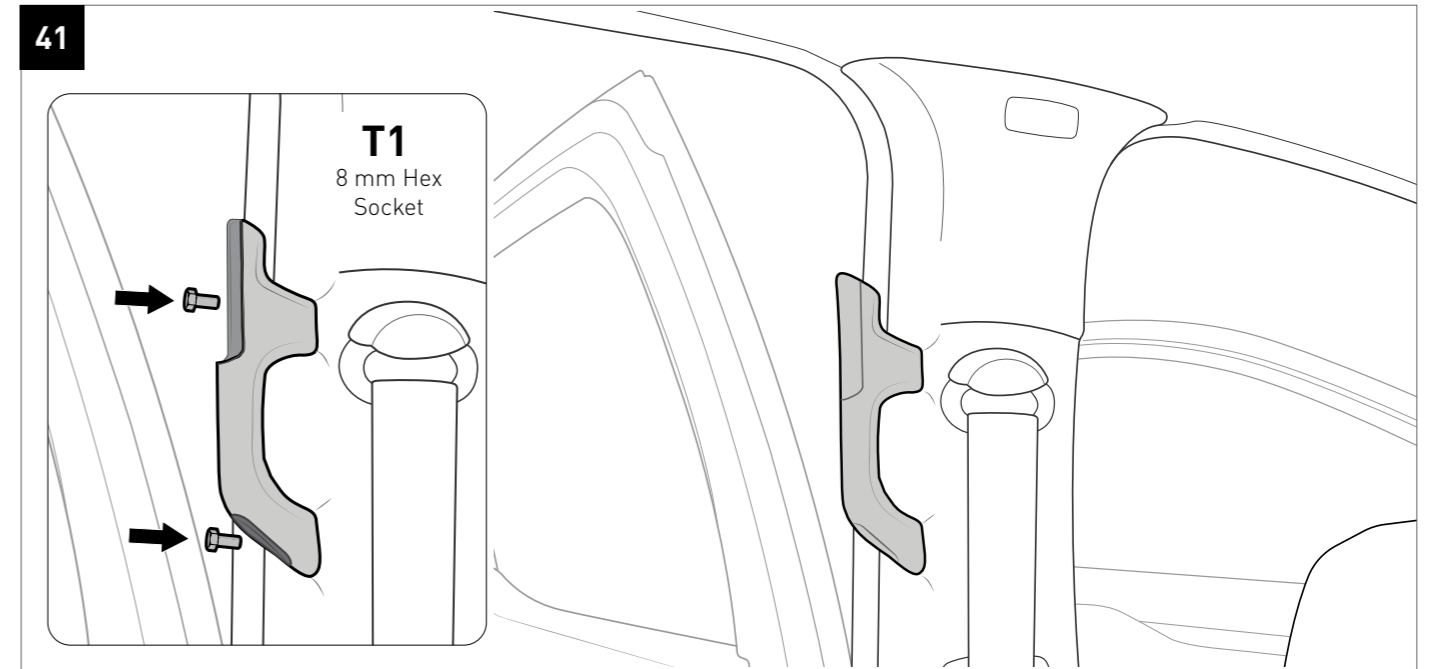
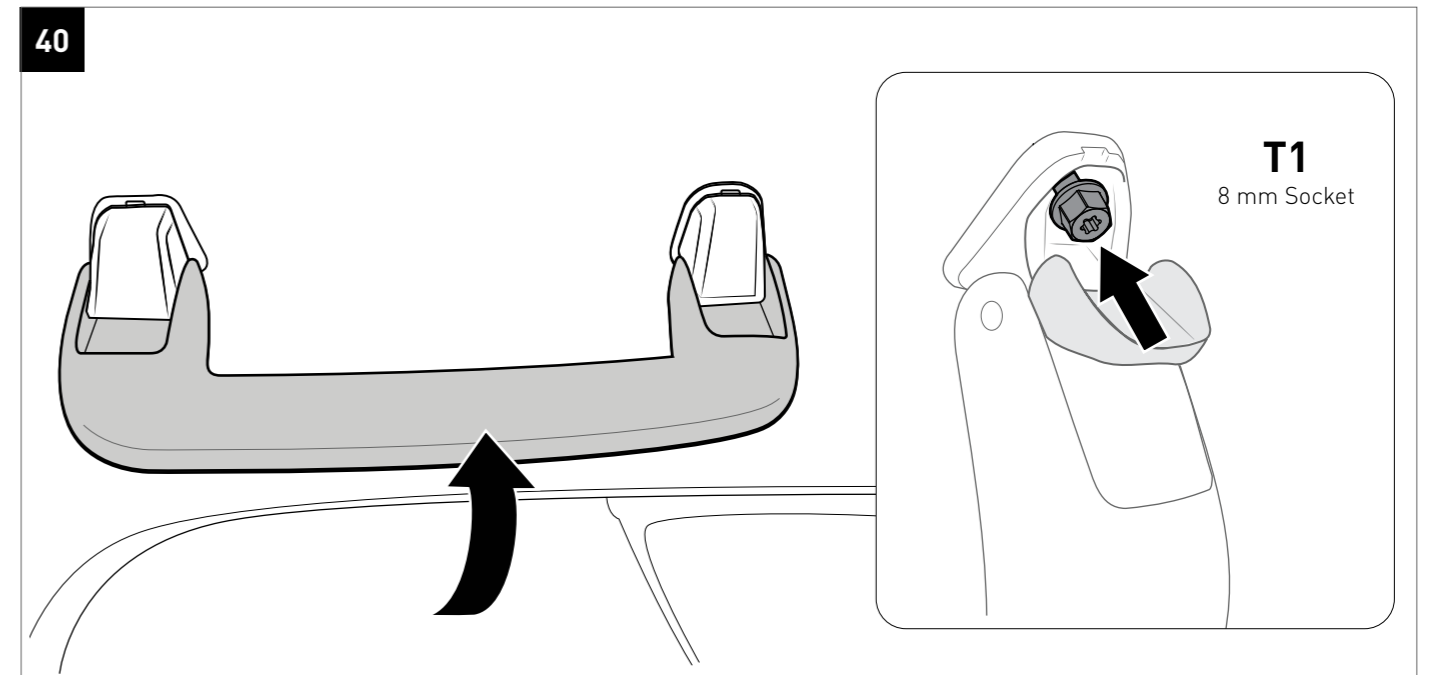
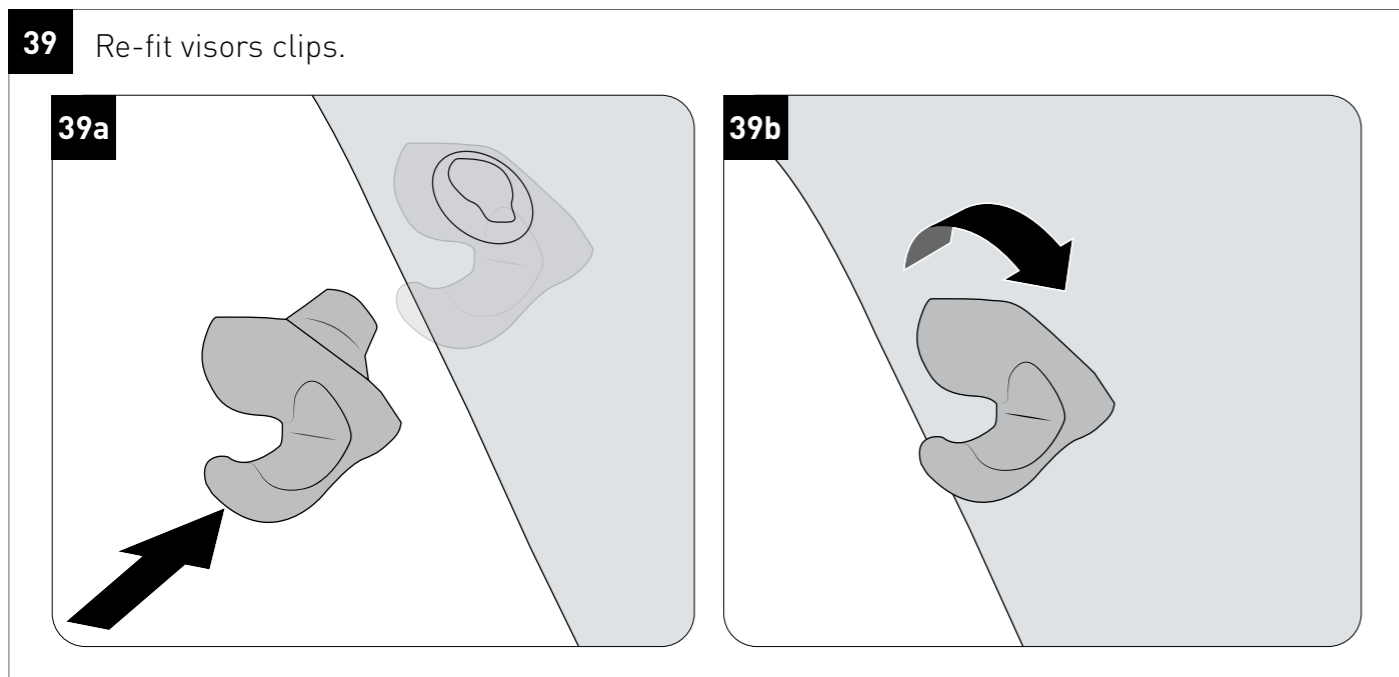
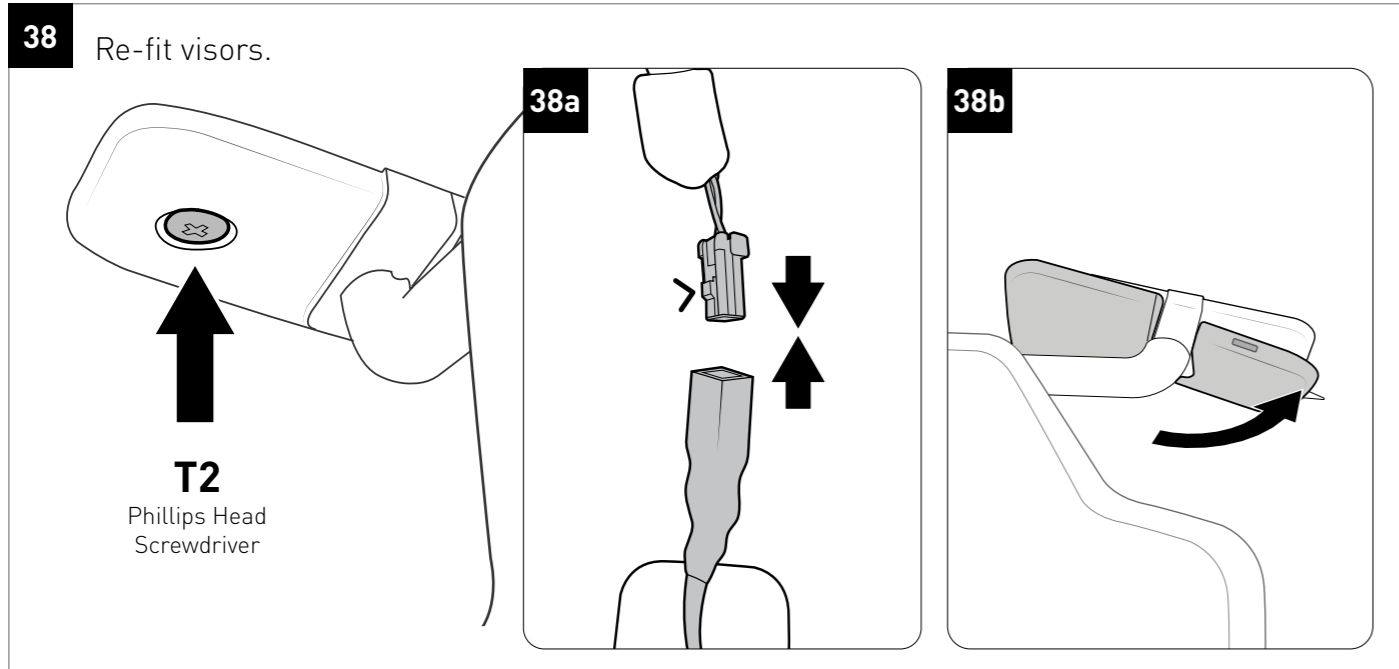
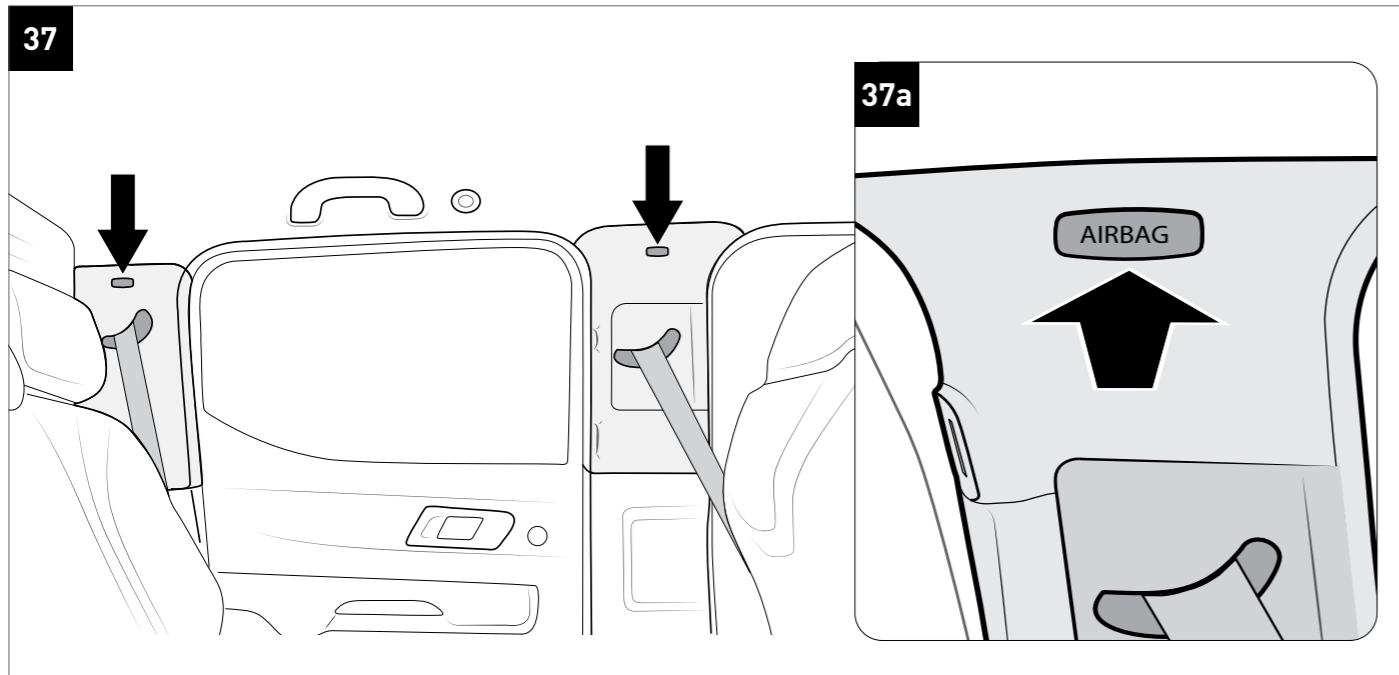
30

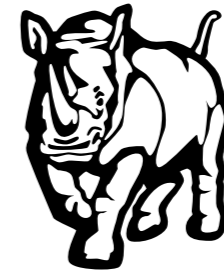
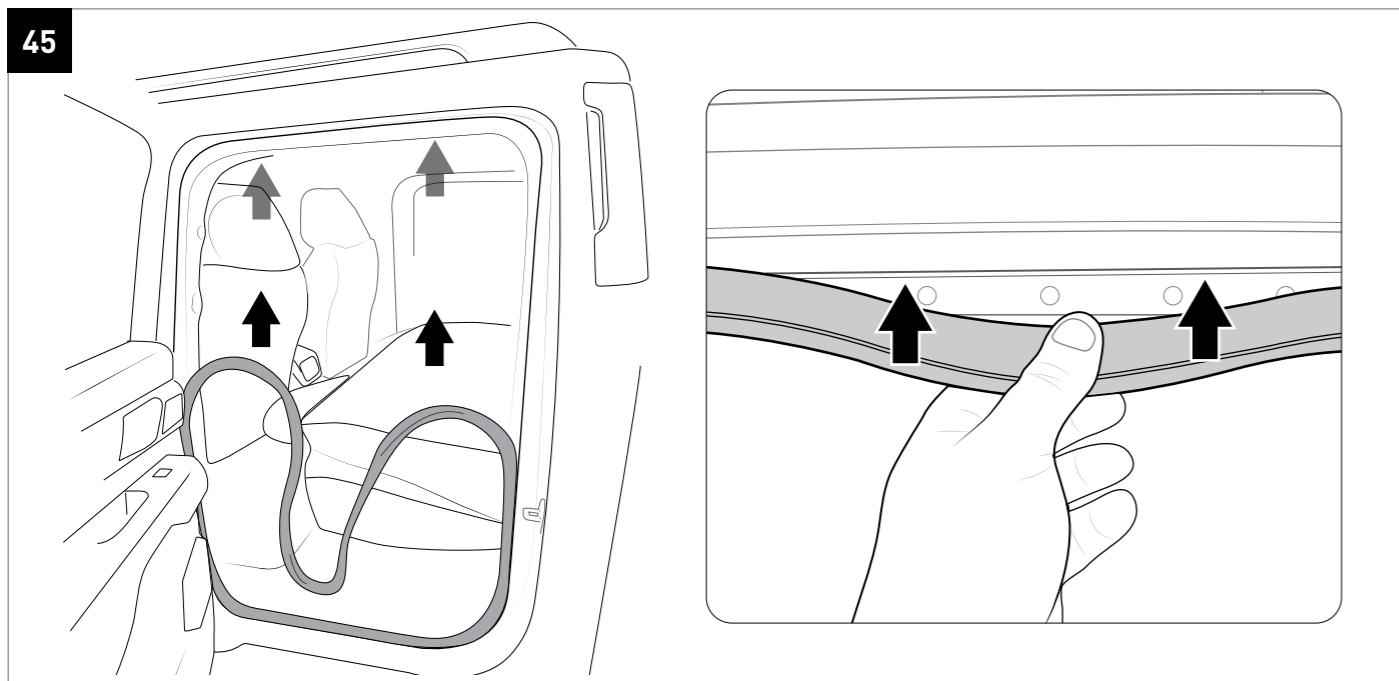
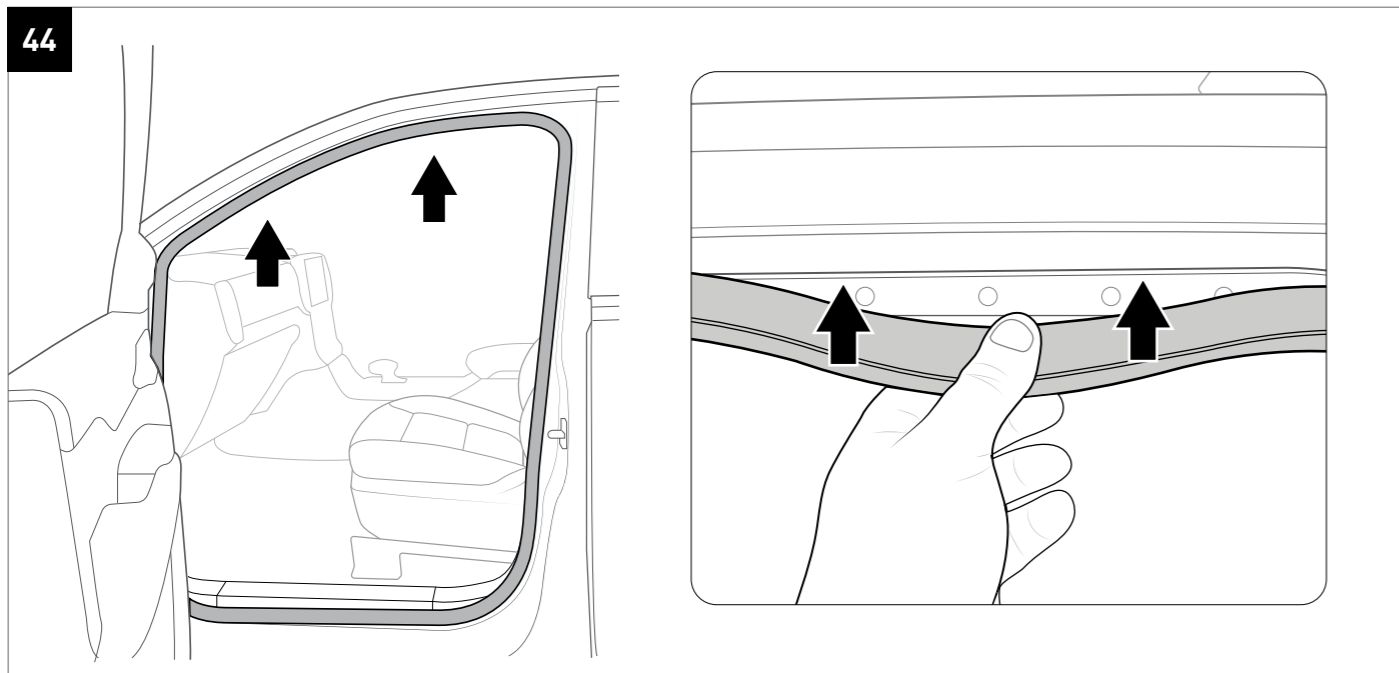
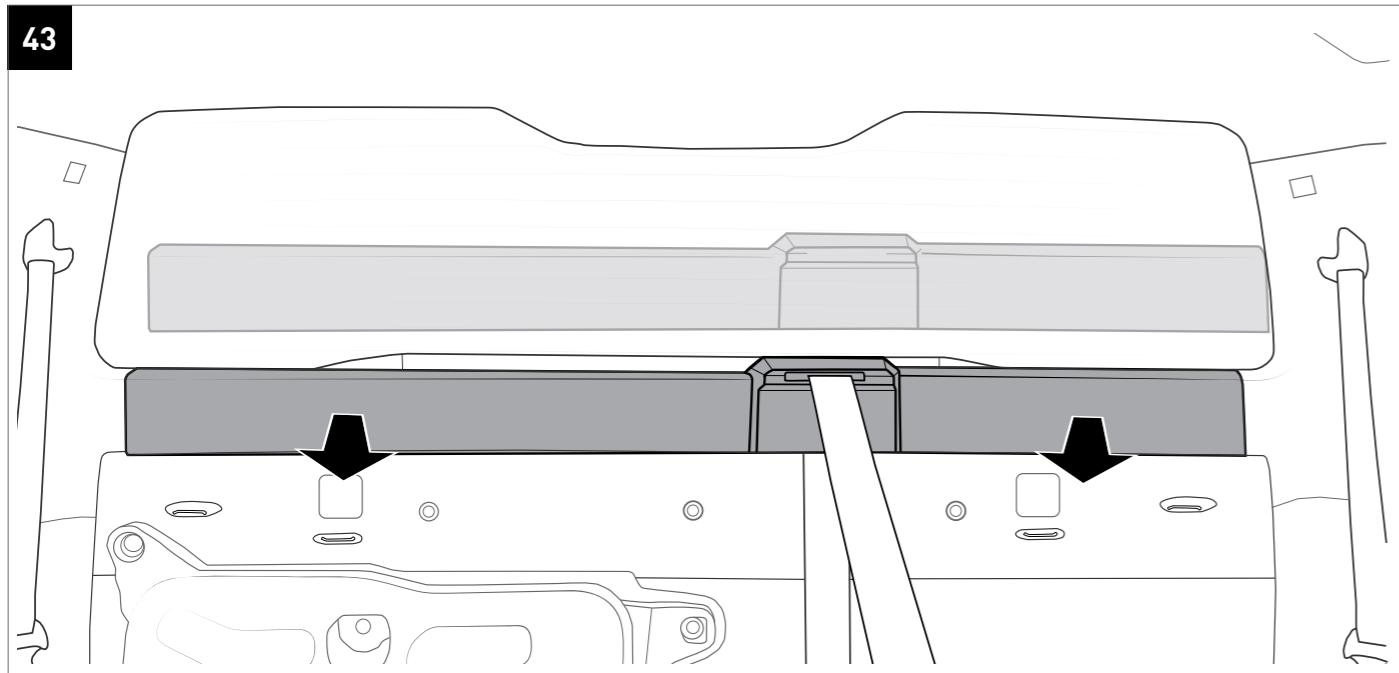


ROOF LINING RE-INSTALLATION

Complete Steps **1** - **20** in reverse.







RHINO-RACK®
MAKE SPACE FOR ADVENTURE

RHINORACK.COM

Rhino-Rack AUSTRALIA
22A Hanson Pl,
Eastern Creek, NSW, 2766

Rhino-Rack USA
19822 E 22nd Ave,
Aurora, CO, 80011